

TOWN OF GILL

MASSACHUSETTS



www.gillmass.org

SELECTBOARD MEETING MINUTES

July 27, 2015

Call to Order: The Selectboard meeting was called to order at 5:30 PM.

Members Present: Randy Crochier, John Ward, and Greg Snedeker

Members Absent: none

Others Present: Ray Purington, Admin. Assistant; Janet Masucci, Jennifer Abeles, Stuart Elliott, Kyle Kendall, Mick LaClaire, Amy Gordon, Lynda Hodsdon Mayo, and Ronnie LaChance

Mowing Fields at Town Forest: Amy Gordon, Chair of the Town Forest Task Force, met with the Selectboard to ask permission to have the Highway Department use their tractor and mower to mow the three field areas at the Town Forest on Hoe Shop Road. An aerial photograph showed there is a 2-acre field/clearing on the east side of the road, and two fields totaling 7 acres on the west side. Task Force member Tim Storrow volunteered his time and equipment to mow in 2014, which was the first time the fields have been mowed since the Town was gifted the property in 2009. Storrow was reimbursed for his fuel, but the project was tough on his equipment.

When asked if the Highway Department has time to do the work, and if it will be tough on their equipment, Highway Superintendent Mick LaClaire answered that they do have the time, and their tractor and mower are suited for the work. It was estimated that mowing all three areas will take less than one day.

In a brief discussion about using town resources to mow the fields, it was felt that the property offers intangible benefits to the Town and its residents, and is worth caring for properly.

John made a motion, seconded by Randy, to authorize the Highway Department to mow the fields at the Town Forest, with the exact details, timing, and frequency to be coordinated with the Town Forest Task Force. The vote was unanimous in the affirmative. Gordon left the meeting at 5:38 PM.

Fire Department Training Manikin: Deputy Fire Chief Stuart Elliott and Training Officer Kyle Kendall presented a purchase order request for a Simulaid "Rescue Randy" manikin for use in the Fire Department's training exercises. Items that they currently use for training are not ideal – other firefighters (unnecessary risk of injury, especially during ladder rescue drills), manikins made from old firehose (falls apart easily and weight isn't distributed like a person), and traffic cones (not realistic at all). Kendall explained that having the manikin would be very beneficial, especially for drills that are meant to simulate the rescue of a downed firefighter.

Tri-State Mutual Aid, with a training facility located in Sunderland, is the only fire agency in the area with a manikin, and other fire departments must pay to use it. During discussion it was felt that if Gill buys a manikin, it wouldn't make sense to loan or rent it to other towns, as there could be excessive wear or damage.

The manikin will be purchased using the Fire Department's training budget, and it has been quoted by the AEDSuperstore for \$1,134 with free shipping. The list price is \$1,260. Ray will investigate if the purchase is eligible under a Loss Control grant offered by MIIA (the Town's insurance carrier). (The answer was no, as the manikin will primarily reduce workers' comp-type losses, and MIIA is not the insurance company that provides coverage for our police and fire employees.)

The purchase order for the training manikin was approved by consensus, whether or not it is eligible for a MIIA grant. Randy made a motion, seconded by John, to authorize Ray to apply for and execute a MIIA grant for the manikin, if it is eligible. The vote was unanimous in the affirmative. Elliott and Kendall left the meeting at 5:50 PM.

Highway 2009 International Truck: Highway Superintendent Mick LaClaire reported that the mast cylinder on the 2009 International dump truck is rusted and pitted, leaking badly, and needs to be replaced. The mast cylinder raises

and lowers the dump body. A new cylinder costs \$1,945, and Rose Ledge has estimated \$300 to install it. (Raymond's Repair no-bid the work as they lack the proper equipment.) LaClaire commented that otherwise, the rest of the truck is in pretty good shape. The Selectboard approved the mast cylinder replacement by consensus.

Highway 2009 Sterling Truck Update: LaClaire presented a list of needs compiled by Highway employee John Miner for the new-to-Gill 2009 Sterling truck. He explained that small repairs (filters, grease fittings) have been getting done in-house, and that he is keeping track of those expenses.

One major concern is the snow plow that came with the truck. It is broken and cracked, and needs to be welded. Steve Grant, a welder from Bernardston, has looked at the plow and believes it can be repaired, but has cautioned that the cost of the repairs may be high enough to warrant a new plow, instead. The Selectboard asked LaClaire to get an estimate from Grant for the repair, and to get pricing for a new plow. LaClaire estimated a new plow will cost in the \$9,000-\$10,000 range.

The truck did not receive an inspection sticker today – it failed because the windshield is too scratched and must be replaced. LaClaire will arrange to have Doug's Auto Body replace the windshield.

For the other repairs, LaClaire will have a truck dealer confirm the list of work that's needed, and he will get pricing from several dealers to do the work. The quotes will be emailed to the Selectboard to review before proceeding with any of the repairs. LaClaire left the meeting at 6:05 PM.

Town Hall Office Walls: Collector-Treasurer Ronnie LaChance and Town Clerk Lynda Hodsdon Mayo provided an update on bids for constructing their new offices at the Town Hall. Augustine Builders was the low bidder for the construction work, and Zilinski Electric was the low bidder for doing the wiring, although there is concern that it might not include as many outlets and data ports as are needed. LaChance and Hodsdon Mayo recommended hiring Augustine Builders for the construction, and Wyman Electric for the wiring.

The Selectboard reviewed the Augustine and Renaissance Builders proposals, and found differences between the two that they would like explained. There were concerns about the brand of windows (Harvey vs. Marvin), and about the number of windows included in the proposal. (It should be three replacement windows and one new window.) The type of insulation being used in the exterior walls must be clarified as well. Any exterior wall that is opened should receive high R-value insulation (better than fiberglass) and be air-sealed. Zilinski will be asked to clarify his quote, to make sure it includes all the desired wiring work.

LaChance will contact the bidders and get the additional information. LaChance and Hodsdon Mayo left the meeting at 6:35 PM.

Minutes: Randy made a motion, seconded by John, to approve the minutes of 7/13. Unanimous in the affirmative.

LED Streetlights: Ray reported that the new LED streetlights have been ordered, with an estimated ship date of August 28th. Tupper Brown and Ray continue to work on licenses and agreements with Eversource and the Town of Amherst.

Riverside Air Source Heat Pumps: The contract between the Town and Gates HVACR has been prepared and should be signed this week. A project initiation payment of \$5,780 is on this week's vendor warrant. Depending on Gates' schedule, the installation may happen the week of August 10th or August 17th.

Sewer I&I: Nothing to report.

Safety Complex Roof: The preliminary project meeting with the roofing contractor and architect was held on July 14th. The roof replacement is scheduled to begin on August 31st, with a completion date of September 22nd.

Gill Elementary Well: The engineering agreement is still being reviewed by USDA.

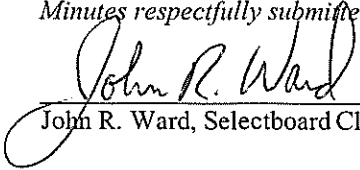
Mariamante Property & Community Solar: Nothing to report.

Masucci and Abeles left the meeting at 6:47 PM.

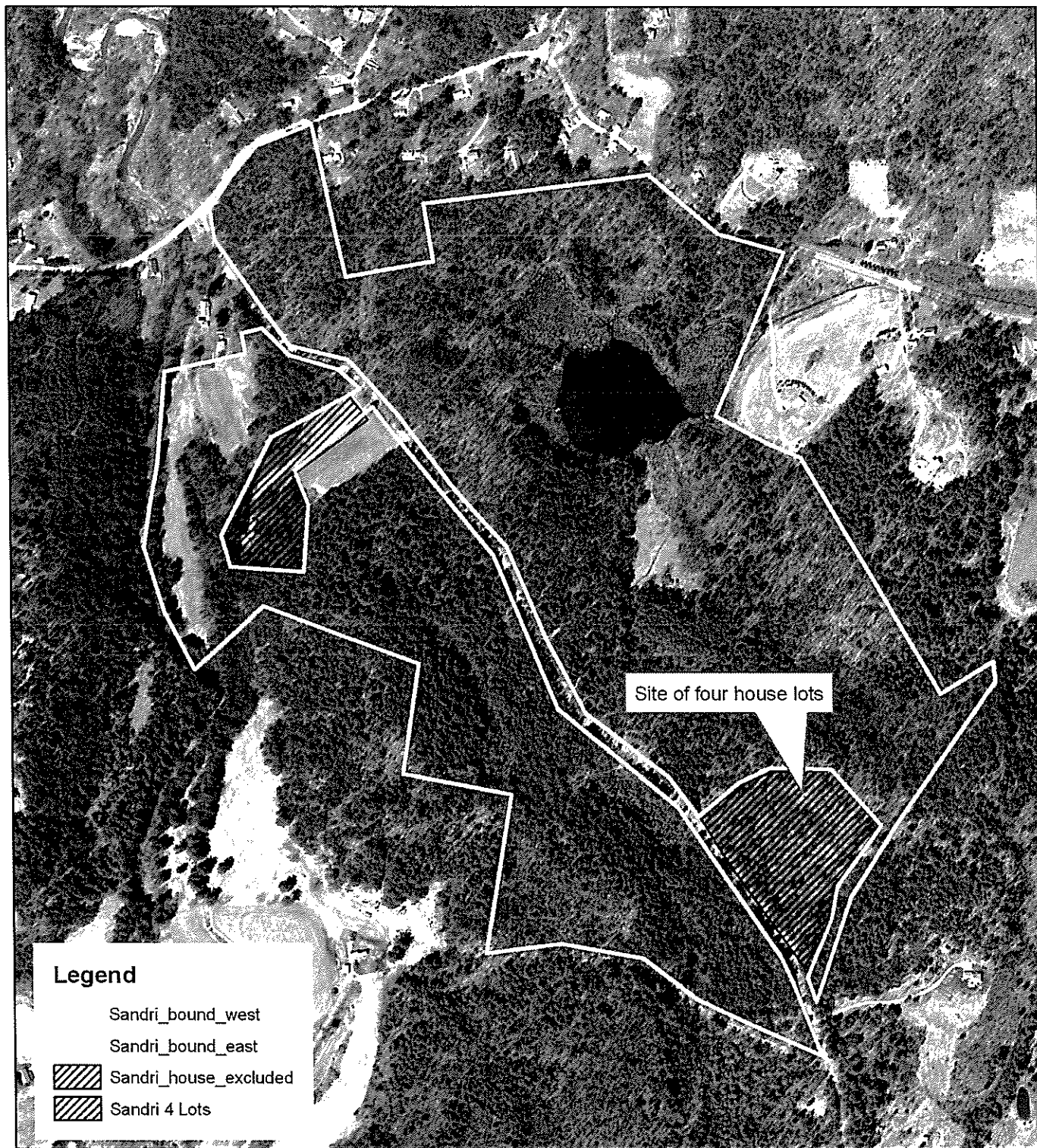
Warrant: The Selectboard reviewed and signed the FY 2016 warrant #3.

The meeting adjourned at 7:15 PM.

Minutes respectfully submitted by Ray Purington, Administrative Assistant.



John R. Ward, Selectboard Clerk



True
NORTH



MAP SCALE:
1 inch = 625 feet

**Sandri Conservation Project,
Gill, MA
AERIAL PHOTO MAP**

**162 +/-
ACRES
less**

Source: Office of Geographic & Environmental Information
(MassGIS), Commonwealth of Massachusetts Executive
Office of Environmental Affairs.
2005 Color Orthophotos. 1:5000



Map Prepared by Franklin Land Trust,
Alain Peteroy, 6/09. Depicted
boundaries are approximate and are
intended for illustration purposes only.



1800 US Hwy 51 N
Woodruff, WI 54568
Phone: 800-544-0048
Fax: 888-364-2377

QUOTE



CUST ID	DATE	QUOTE #
188545	7/24/2015	85305

PREPARED FOR:	413-863-9347
Ray Purington Town of Gill 325 Main Rd Gill MA 01354-9758	

SHIP TO	413-863-9347
Ray Purington Town of Gill 325 Main Rd Gill MA 01354-9758	

Shipped via:	Free Shipping	Fax Number:	413-863-7775	Reference:	
--------------	---------------	-------------	--------------	------------	--

Item	Description	Quantity	Current Price	Your Price	Total
1435	Rescue Randy Combat Challenge Manikin (165 lbs Weighted) by Simulaids. 6' 1" Tall and Weighs 165 lbs. Features include articulated joints and weight distribution according to human weight distribution chart. Turnout Gear not included	1	\$1,260.00	\$1,134.00	\$1,134.00
Free Gift	AED Superstore Responder CPR Barrier Keychain	1	\$4.99	\$0.00	\$0.00

FREE Responder Keychain™ included with this order, compliments of your AED Superstore®

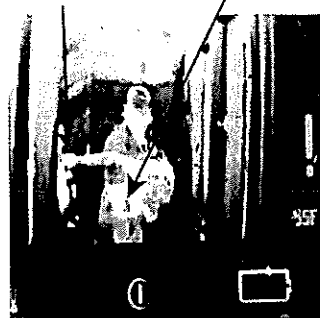
Subtotal	\$1,134.00
Shipping	FREE
Sales Tax	\$0.00
Estimate Total	\$1,134.00

John R. Ward
Angela M. Sch
RAP

Estimate valid for 30 days from above date.
All items listed above are covered under our 30 Day Money Back Guarantee!

AEDSuperstore®
an ALLIED 100® company

PROUD SUPPLIER TO THE US GOVERNMENT
GSA/VA Contract Number: V797P-4822a
Contract Expiration Date: 7/31/2015
DUNS #: 121 306 984
CAGE Code: 3DHR2
FEIN/TIN: 27-0005083
Business Size Classification: Large



TI Rescue Randy

The thermal imaging capability with TI Rescue Randy expands options for rescue training. Thermal imaging scanners are now able to see Randy at a distance of over 20 ft. Special heaters in the face and hands operate off of standard 110V or 220V power outlets and reaches desired temperature in 15 minutes. You can set the temperature you want on TI Rescue Randy and he will be visible on scanner for over 45 minutes unplugged. Ideal for rescue training in buildings or search and rescue in the field, Rescue Randy TI will stand out from the background thermal image.

TI Rescue Randy has been tested in smoke and steam-filled spaces for firefighting environments, with demonstrated realistic simulation for rescue and extraction training. In real world environments, the manikin is not likely to be presented with the entire body or torso exposed for easy heat signature definition. Therefore, you should train with smaller presentations such as the head and hands. Training with firefighters has shown the real value of TI Rescue Randy to deliver the quality presentation needed for effective training and the added reality in life-size presentation that presents the same issues during extraction that are encountered with an incapacitated victim. Even without a power supply, TI Rescue Randy can hold a presentation that is realistic and effective for training with the thermal imager for over 45 minutes. TI Rescue Randy provides enhanced training opportunities for a wide range of applications such as:

Military applications — Training to fight main space fires, search and rescue.
Corrections and police — Training for escape and evasion scenarios and flexible enough to support training out in the field or on location.

TI Rescue Randy is built around an industry leading, rugged, and stable platform that delivers value for years, now enhanced to take your training to a new level of effectiveness. TI Rescue Randy is available at different weights. Contact us at 1.800.431.4310 for details.

No. TI Randy 165 Size: 55" x 27" x 13". Sh. wt. 185 lbs. — \$2,280.00

No. TI Randy 145 Size: 55" x 27" x 13". Sh. wt. 165 lbs. — \$2,124.00

New

TI Randy with Voice System

This TI Randy includes the dimension of sound to assist your search and rescue training. The voice system is a simple, cost-effective way to expand the scope of your training using the TI Randy. The voice system is located in the head and has three operations:

- Always On — a pre-recorded track plays on a continuous loop
- Sensor Based — a pre-recorded track plays on voice command
- Off

Unit weighs 165 pounds.

No. 9500 — \$2,780.00

New

TI Baby

Simulaids expands thermal imaging training with TI Baby. It is not just a matter of getting through the smoke; it is about identifying objects and the ability to see contrasts between surfaces. TI Baby can be seen through smoke and steam by comparing the surface heat to the surrounding environment.

Training with thermal imaging in real-life spaces and conditions can be dangerous. A smoke house used by a local fire department may expose a live actor to unnecessary risk while waiting for crews to find them. The same is true in other areas of search and rescue. Using Simulaids' TI manikins can provide realistic and effective training to ensure that staff is kept safe and trained on the use and operation of thermal imaging equipment.

Special heaters operate off of standard 110V or 220V power outlets and reaches desired temperature in 15 minutes. The TI Baby weighs 12 lbs. and is 26" tall. Size: 28" x 17" x 10".

No. 1482 — \$1,100.00

New

Rugged Rescue Randy

Simulaids has kept all of the training features you prefer and added increased durability and flexibility for improved and varied training exercises.

Reinforced joints and the ability for increased mobility are available in the Rugged Rescue Randy. The tear-resistant joints provide the extra durability required for extreme training and the cable system adds strength and increases flexibility. You can extricate Rugged Rescue Randy from vehicles, aircraft, or other restricted areas that previously created great training challenges. Rugged Rescue Randy allows you to train in new places with greater realism and better training outcomes. Rugged Rescue Randy is available at different weights. Contact us at 1.800.431.4310 for details.

Rugged Rescue Randy 165 lbs. Sh. wt. 185 lbs.

No. 1400 — \$1,460.00

Rugged Rescue Randy IAFF 165 lbs. Includes the same features as above plus additional reinforcement of the buttocks. Sh. wt. 185 lbs.

No. 1410 — \$1,522.00

I.A.F.F. Rescue Randy

A Rescue Randy including all the same features and durability of the Combat Challenge manikins was designed with the help of the I.A.F.F. This model includes additional reinforcement of the buttocks to increase durability for lifelike adult victim handling, transportation, and extrication training. Clothing not included.

Size: 55" x 27" x 13". Sh. wt. 185 lbs.

No. 1475 — \$1,322.00

Optional Carry Bag. Sh. wt. 8 lbs.

No. 2094 — \$163.00

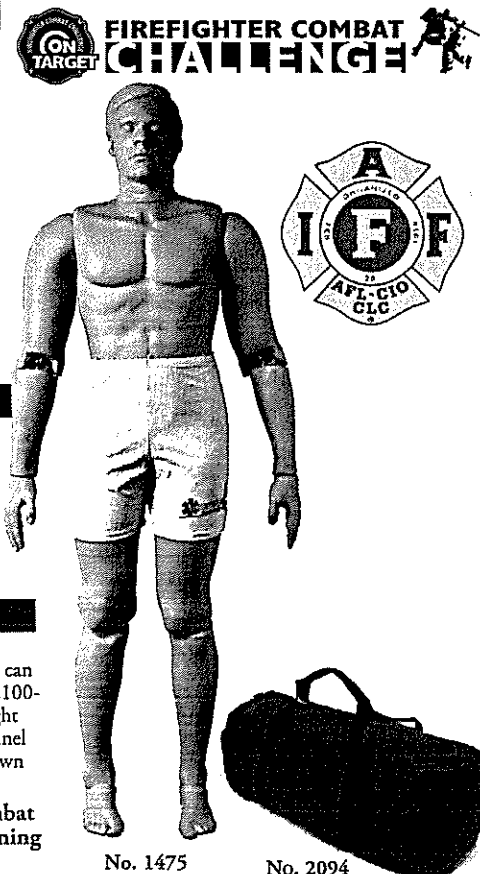
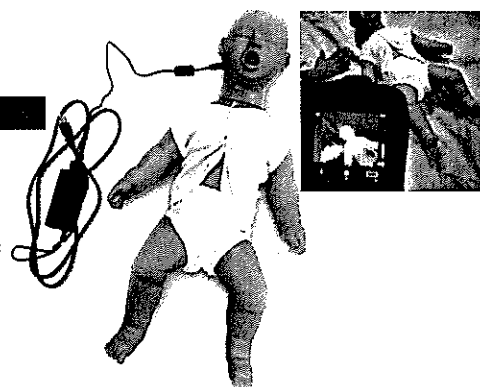
Rescue Randy Combat Challenge

The Official Manikin of the Firefighter Combat Challenge. Rescue Randy and the Combat Challenge Kid were developed for lifelike adult or juvenile patient handling, transportation, and extrication training. These manikins can be safely used in situations too hazardous or uncomfortable for human volunteers. Made of durable vinyl with 4,100-lb. test plastic-coated cables. Features include articulated joints and weight distribution according to human weight distribution chart. Used by the U.S. Military, Fire and Police Departments, Safety Teams, and Emergency Personnel for rescue and extrication from pole top, confined spaces, collapsed buildings, smoke rooms, and ladder carry-down protocols world wide. Turnout gear not included.

Rescue Randy Combat Challenge 145 lbs. Size: 55" x 27" x 13". Sh. wt. 165 lbs.
No. 1434 — \$1,105.00

Rescue Randy Combat Challenge 165 lbs. Size: 55" x 27" x 13". Sh. wt. 185 lbs.
No. 1435 — \$1,260.00

Carry Storage Bag for Combat Challenge and I.A.F.F. Training Manikin. Sh. wt. 8 lbs.
No. 2094 — \$163.00



STAT Patient
Simulators

Basic Life
Support

Advance
Life Support

Medical

Replacement
Parts

Trauma

Casualty
Simulation

Rescue

AEDSuperstore[®]

AED Value Packages

AED Medical Direction

VIEW CART

World's Largest Automated External Defibrillator Source

search

Call Us!

[Home](#) | [Buying Guide](#) | [Customer Service](#) | [Contact](#) | [FAQ](#) | [My Account](#)
 800.544.0004 Monday - Friday, 7am-7pm central

search by keyword

CHAT



FREE SAME DAY SHIPPING

• MORE INFO

on orders of \$99 or more!



NEED PADS AND BATTERIES FOR YOUR AED?

• CLICK HERE

PREVIOUS

[AED](#) > [Training Manikins](#) > [Simulaids](#) > [Simulaids Rescue Manikins](#)


Click to Zoom

Shown with simulated firefighter rescue in progress.

Call or Order Online and Receive:

- ▶ Same Day Shipping > DETAILS
- ▶ 30-Day Money Back Guarantee > DETAILS
- ▶ 110% Low Price Guarantee > DETAILS
- ▶ Authorized Distributor > DETAILS
- ▶ Exceptional Customer Service > DETAILS

Simulaids 165 lbs. Rescue Randy Combat Challenge Manikin

Part #: 1435

Our Price: \$1,260.00

Quantity:

1



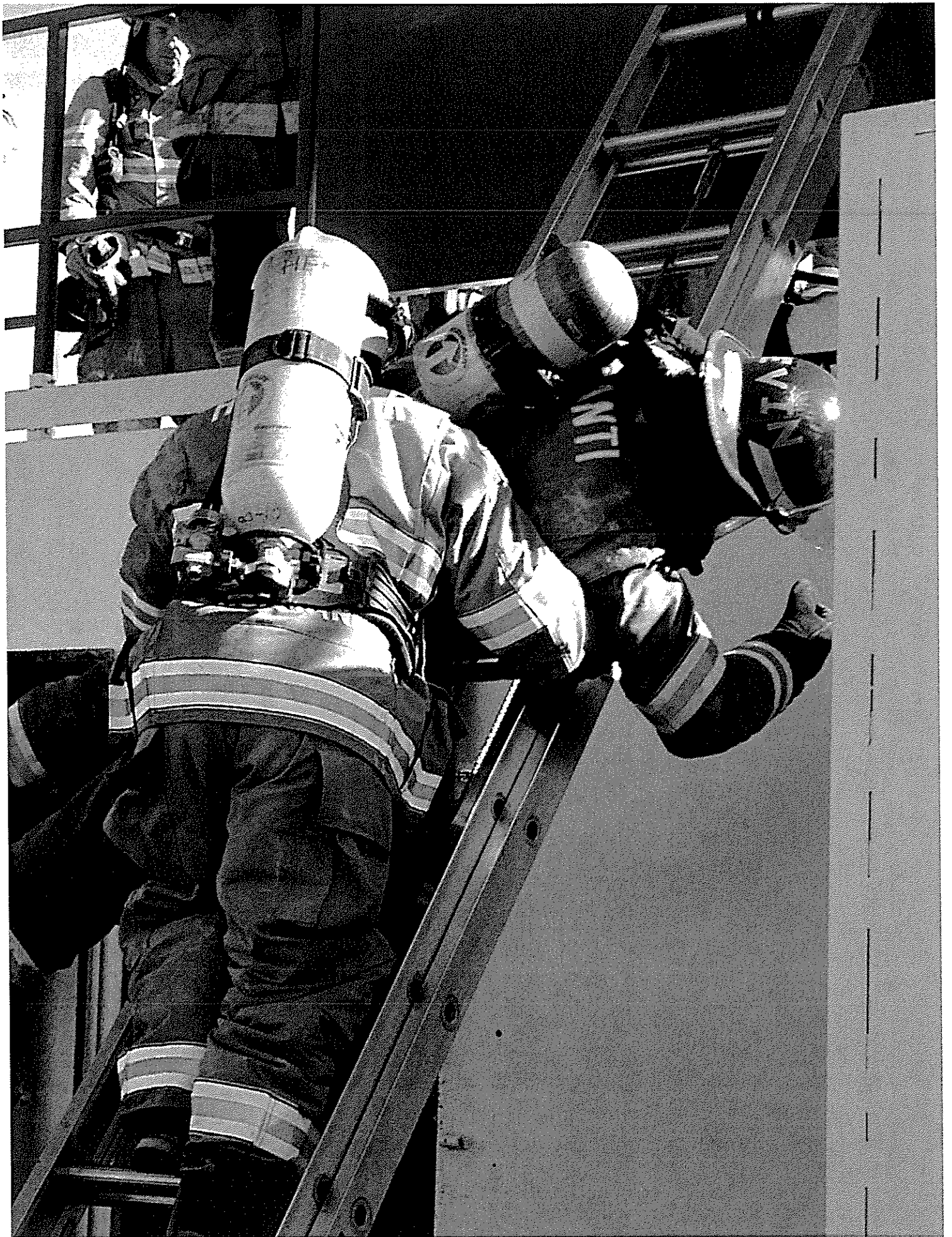
ADD TO CART

Overview Customer Reviews Accessories

Rescue Randy was developed for lifelike adult or juvenile victim handling, transportation, and extrication training. These manikins can be safely used in situations too hazardous or uncomfortable for human volunteers. Made of durable vinyl with 4,100 lb. test plastic-coated cables. Used by the U.S. Military, Fire, and Police Departments, Safety Teams, and Emergency Personnel for rescue and extrication from pole top, confined spaces, collapsed buildings, smoke rooms, and ladder carry-down protocols worldwide. Ships with sweat shorts. Turn-out gear not included.

Features include:

- Training manikin (6' 1") with articulated joints
- Weight distribution according to human weight distribution chart.
- Carry bag
- Shipping size: 56" x 27" x 13"
- Shipping weight 185 lbs.





Purchase Order

TOWN OF GILL HIGHWAY DEPARTMENT
196C MAIN ROAD
GILL, MA 01354
TEL: 413-863-2324

To: Gill Selectboard

01- FY16

Date: July 27, 2015

Purchase order for Repair of 2009 International Dump Truck

This is for the repairs of the truck body piston. The piston is leaking fluid and cannot be re-packed due to the cylinder being pitted. The company has also stopped manufacturing that same piston and has replaced it with a updated version for that body.

The cost of the piston is quoted as \$ 1945.00

Thank you,
Mitchell LaClaire Sr.
Highway Supt.

John R. Ward
Log M. Sk
RDP

New Truck needs

On-SPOT selinoid - Doesn't work

Windshield - All scratched

Spinner assembly - bent

Flight chain - wore out
sprockets + Bearings

On-SPOT chains - wore out

Canvas Arms - wore out
chute

Tires + Rims

Driver seat - wore out

(5) SPOT LIGHTS - Painted over

~~Body Alarm - none present~~

~~Side boards - none present~~

Rear fenders - none present

Arm for wing - Bent (\$850.00)


Repair + Rebuild plow - ROTTEN

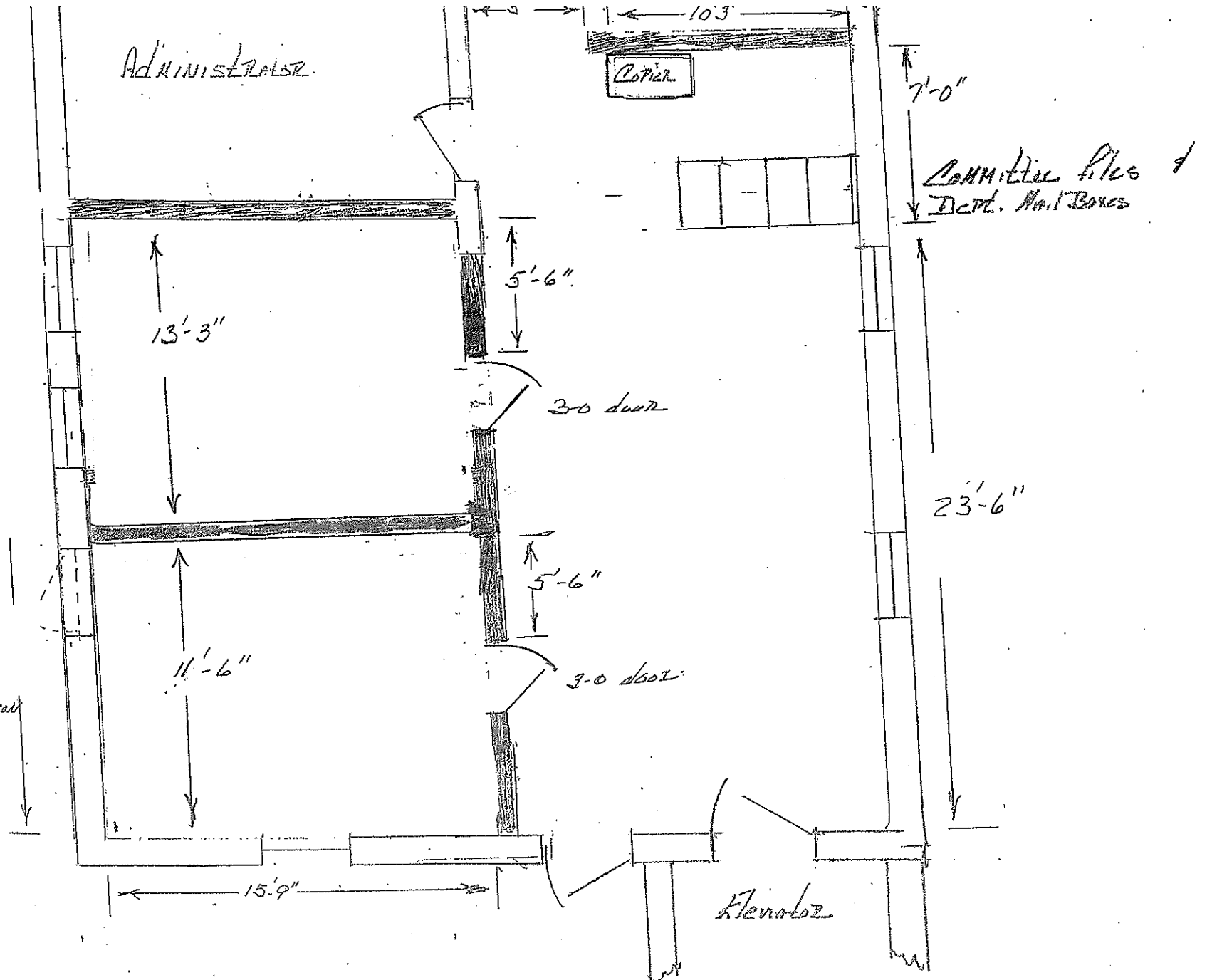
Two way Radio

Body Grate - none present (\$3000)

Not to scale

Block up openings & change
to window to match existing

 New wall construction



Town Hall Offices Renovation

Construction Bids

Augustine Builders
\$17,500.00

Renaissance Builders
\$20,190.00

Waldron Builders
No Bid

Zilinski Electrician
\$3,500.00

Wyman Electrical
\$4,200.00

Gray Electric
No Bid

Tognarelli Plumbing
See attached

Wallace
No Bid

Attached are the Bids

Proposal

AUGUSTINE BUILDERS

Roger L. Augustine

124 North Cross Road

GILL, MASSACHUSETTS 01354

LIC. #038546 REG. #104404

PHONE (413) 863-3011 FAX (413) 863-4036

RECEIVED JUL 10 2015

Proposal submitted to Town of Gill, MA	Phone	Date July 7, 2015
Street Main Road	Job Name Build two offices in the town hall	
City, State and Zip Code Gill, MA 01354	Job Location Same	

We hereby submit specifications and estimates for:

Build three walls for two approx 12'x12' offices in the north corner on the first floor of the town hall.

Includes:

Using 2x4 framing, insulate all new walls, half inch drywall, taped, sanded, primed & painted.

Install two birch doors, trim & baseboard to match existing & clear finish with polyurethane.

Remove section of dropped ceiling for dividing wall & reinstall it leaving the existing ceiling. Also leave the existing floor tile & wall paneling.

Build a removable counter bar in the door of the tax collectors office & polyurethane.

Remove existing & install three new white vinyl replacement windows by Harvey.

Remove one existing exterior northwest door. Move header up to match existing window height and size if possible if it is not timber framed or a bearing header. Frame in opening & install a vinyl window to match existing as close as possible. Close up & trim the inside where door was with drywall.

Insulate close up outside with sheathing, siding, trim & paint.

Clean up & properly dispose of all debris.

Building permit by others.

Electrical, plumbing, heat, alarm, computer, & phone work is not included.

We Propose hereby to furnish material and labor – complete in accordance with above specifications, for the sum of:

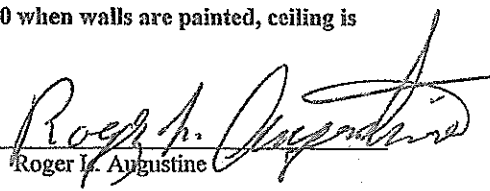
Seventeen Thousand Five Hundred dollars (\$ 17,500.00).

Payment to be made as follows:

\$5,000.00 when walls are framed & windows & doors are ordered. \$5,000.00 when walls are painted, ceiling is put back & doors are hung. Balance due in full upon completion.

All material is guaranteed to be as specified. All work to be completed in a workmanlike manner according to standard practices. Any alteration or deviation from above specifications involving extra costs will be executed only upon written orders, and will become an extra charge over and above the estimate. All agreements contingent upon strikes, accidents or delays beyond our control. Owner to carry fire, tornado and other necessary insurance. Our workers are fully covered by Workman's Compensation Insurance. NOTE: This proposal may be withdrawn by us if not accepted within thirty days.

Authorized
Signature:


Roger L. Augustine

Acceptance of Proposal – The above prices, specification and conditions are satisfactory and are hereby accepted. You are authorized to do the work as specified. Payment will be made as outlined above.

Signature: _____

Signature: _____



PO Box 272, Turners Falls, MA 01376
Phone (413) 863-8316; Fax (413) 863-9712
www.renbuild.net

July 13, 2015

Town of Gill
Ronnie LaChance
325 Main Road
Gill, MA 01354

Proposal for interior renovations to first floor office area at above address.

Scope includes the following:

Construct new walls to create two new offices.

New walls to penetrate the existing acoustic ceiling and connect to underside of floor framing.

Change exterior door to window.

Price quoted includes Prevailing Wage rates.

1000 GENERAL CONDITIONS

1010 Plans & Specifications

- A. Supply drawings as required for building permit application.

1020 Permits

- A. Supply all building permits as required.
- B. Proposal assumes Town of Gill is waiving permit fee.

1300 Project Management

- A. Provide copy of current Construction Supervisor's license.
- B. Provide shop drawings, samples, color choices, and/or selection charts as needed for Owner's approval.
- C. Coordinate operations under different sections that are dependent on each other for proper installation and operation.
- D. Notify Owner as necessary when scheduled work will impact occupied portions of the premises.

1310 Supervision

- A. Provide supervision at all phases of construction.

1400 Warranty

- A. Supply certificate of liability (minimum \$5 million) and Worker's Compensation insurance.
- B. All work performed or subcontracted by Renaissance Builders to be guaranteed for one year.

1530 Temporary Protection

- A. Provide floor and dust protection to work areas, and provide a walkway to and from work areas.

1730 Cleanup & Trash Disposal

- A. Clean up all debris and leave the job site broom clean at completion of all work.
- B. Legally dispose of all debris.

1950 Owner Responsibilities

- A. Cost of electricity and water during construction.
- B. All other phases not specifically outlined in this Proposal.

1960 Work by Owner's Contractors

- A. All Electrical, Fire Alarm and HVAC including demo of same.

2000 SITE WORK

2220 Demolition, Exterior

- A. Remove and legally dispose of door and frame.
- B. Remove clapboard siding as needed to weave in new siding.

2225 Demolition, Interior

- A. Remove and dispose of existing interior door casing.
- B. Remove existing ceiling tiles and grid as needed to allow for new wall between new offices to be built to underside of floor framing.
- C. Salvage all ceiling tiles for reuse.

6000 WOOD & PLASTICS

6120 Framing, Walls

- A. New interior walls to be 2" x 4", 16" o.c.
- B. All 2" x 4" walls to have two 12d common nails per each end of stud.
- C. Walls as shown on plans supplied by Town of Gill.
- D. Reframe opening where door has been removed for new window using material equal in size to existing wall framing.
- E. New exterior sheathing to be plywood equal in size to existing wall sheathing.

6220 Casing & Base

- A. Window and door casings to be clear white pine and match existing profiles as closely as possible.
- B. Base moulding to be clear white pine and match existing profiles as closely as possible.

6720 Exterior Trim

- A. Install new exterior trim around new window to matching existing windows using Boral composite lumber.
- B. Build and install new shutters to match existing shutters using Boral composite trim.

7000 THERMAL & MOISTURE PROTECTION**7200 Insulation, Vapor Barrier**

- A. Install Tyvek® DrainWrap wind barrier on new exterior wall section prior to installation of new window. Tape all seams with Tyvek tape. Repair all tears in Tyvek with Tyvek tape prior to start of installation of siding.
- B. All new interior walls to insulated using 3" Rock Wool sound insulation.
- C. All door jambs of new doors to be insulated using Rock Wool sound insulation.
- D. All exterior walls opened in the course of renovations to be insulated with 3" of polyisocyanurate foam and air sealed.
- E. Install spray foam insulation around perimeter of new window.

7460 Siding

- A. Siding to be 1/2" x 6" clear vertical grain cedar, pre-primed on both sides.
- B. All new siding to be woven into existing siding pattern so as to not create vertical joints.
- C. All wood siding to be nailed with ring shank stainless steel nails.
- D. All wood to be back-primed on all edges including cuts prior to installation.

8000 DOORS & WINDOW**8200 Doors, Interior**

- A. Interior door sizes and quantities as follows:

Quantity	Size	Type	Jamb
2	3'-0" x 6'-8"	1-3/4" hinged, flush birch	Clear pine rabbeted

- B. Shim doors at all hinges and all corners.

8500 Windows

- A. New window to be Marvin window with Low-E argon filled glass, 5/8" SDL grills to match existing grill pattern, and aluminum clad exterior.
- B. Window to have clear pine interior.

8700 Hardware, Doors & Windows

- A. Door hardware to be PDQ Grade 2.
- B. Each door to have lever handle lockset with separate keying.
- C. Doors to have ball bearing hinges.
- D. All hardware to be bright brass.

9000 FINISHES**9200 Sheetrock & Plaster**

- A. New walls to have 5/8" drywall.
- B. All joint tape to be fiberglass mesh type, applied using Durabond dry mixed compound.

- C. Finish all drywall with three coats of joint compound, sanded smooth.
- D. All drywall to be sealed at perimeter of panels with acoustical sealant.

9500 Acoustic Ceiling

- A. Install wall angle at new wall.
- B. Reinstall salvaged ceiling tile.

9910 Paint, Exterior

- A. New siding and trim to receive two coats Benjamin Moore, Sherwin Williams or equivalent best quality paint.

9920 Paint, Interior

- A. Fill all nail holes with non-shrink putty.
- B. All new interior walls to receive one coat of Benjamin Moore Fresh Start® MoorWhite®, Sherwin Williams or equivalent primer sealer.
- C. Interior walls to receive two coats of Benjamin Moore, Sherwin Williams or equivalent flat acrylic paint.
- D. New standing and running trim, door and window casings, millwork, and interior doors each to receive a total of three coats of polyurethane.

Price**\$ 20,190.00**

Except as specifically stated above, this Proposal does not include any correction of existing concealed substandard framing; rerouting/removal of vents, pipes, ducts, structural members, wiring or conduits which may be discovered in the course of removing walls or cutting openings in walls; or removal and replacement of existing rot or insect infestation. If such repairs are discovered to be necessary once the construction is underway, such repairs will be undertaken on a time and materials basis only after consultation with the Owner. Failure by the Owner to authorize necessary repairs may void applicable warranties.

We propose to furnish material and labor, complete in accordance with these specifications, for the above sum. All material is guaranteed to be as specified. All work is to be completed in a workmanlike manner according to standard practices. Any alteration or deviation from above specifications involving extra costs will be executed only upon written orders, and will become an extra charge over and above the estimate.

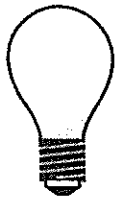
Our workers are fully covered by Workmen's Compensation Insurance.

CGR, CGP and EPA Lead Safe Certified.

This Proposal may be withdrawn by us if not accepted within thirty days.



Stephen Greenwald
Renaissance Builders
License #013302
Registration #106490



NEIL A. ZILINSKI ELECTRICIAN

655 MAIN ROAD GILL, MA 01354
413-498-2605 LIC# 39553E

Estimate

Number: 391

Date: July 12, 2015

Bill To:

ATTN. TOWN ADDMIN
GILL TOWN HALL
325 MAIN RD .
GILL, MA 01354

Ship To:

ATTN. TOWN ADDMIN
GILL TOWN HALL
325 MAIN RD .
GILL, MA 01354

DUE ON RECEIPT

2 NEW OFFICES

Description	Quantity	Price	Amount
WIRE IN 2 NEW OFFICES WITH 4 NEW PLUGS IN EACH OFFICE. 1 NEW PHONE / COMPUTER IN EACH OFFICE MOVE FIRE ALARM HORN AND PULL STATION TO NEW LOCATION. INSTALL 2 NEW HEAT DETECTORSTO OFFICES.REMOVE OLD EXIT LT IN OLD DOOR WAY BEING REMOVED.		3,500.00	3,500.00
Total			\$3,500.00

PLEASE SIGN AND RETURN IF ACCEPTED.

ELECTRICAL CONTRACTOR
451 Millers Falls Road, Millers Falls, MA 01349

Proposal

DATE	ESTIMATE NO.
7/2/2015	98300

Town of Gill
325 Main Rd.
Gill, MA 01354

PROJECT		LOCATION	
		Town Hall	
DESCRIPTION			Total
Install wiring for new Town Clerk and Collector-Treasurer offices			4,200.00
Price includes;			
1. Install up to 8 outlets per office			
2. Install up to 4 data lines per office			
3. Install wiring and connect to existing phone lines			
4. Rewire fax line to new copier location			
5. Install/ rewire existing line for state computer link to new Town Clerk office			
6. Remove exit sign and wiring from above existing door			
Note; Fire alarm work to be done by others			
Lighting to stay as existing			
Quote good for 90 days			
Total			\$4,200.00

Called Joel Tognarelli and Jason Wallace, to inquire if we had enough base board to cover heating, of each office for the Town Clerk and Collector/Treasurer.

Jason Wallace did not return my calls.

Joel Tognarelli came in, we showed him the layout. Joel said the Clerk's office has Sufficient baseboard, the office may have too much heat. It would be an easy fix just to close the louver on the baseboard, or remove some of the fins. The Collector/Treasurer office only has one outside wall that may need additional baseboard added on to the end close to the outside door that is being replaced by a window.

Joel indicated that this doesn't need to be done now, he suggested we wait. I asked if he could give us a ballpark figure. He said it would cost approximately \$300 to \$500.