



SELECTBOARD AGENDA & MEETING NOTICE

August 30, 2021

***Indicates item added after the 48 hour posting
bold underlined time = invited guest or advertised hearing
(all other times are approximate)

Location: Gill Town Hall, 2nd Floor

Face coverings required per Board of Health mandate.

5:30 PM Call to Order (If the meeting is being videotaped, announce that fact. If remote participation will occur, announce member & reason, & need for roll call voting)

Old Business

- Review of Minutes
- Gill Elementary School Floor Replacement Project – report on any new information or updates

New Business

- Highway Department – Request to purchase used 14-foot stainless steel sander from JC Madigan Inc. for \$10,000 and trade in our old stainless steel sander for \$1,000
- OPEB Valuation Proposal from Odyssey Advisors - \$5,500 covering FY21 & FY22
- Review & vote on keeping Gill as a single (1) precinct for elections, based on 2020 Census population of 1,551. Sign “Single Precinct Authorization Form” and “Vote of Adoption”
- Sewer Abatements
 - Linda Welcome, 2 Grove St, \$156.98
 - Peter Griffin, 7 Grove St, \$829.14
 - Cathleen Demars, 10 Walnut St, \$156.65
 - Jenna Carne, 19B Riverview Dr, \$15.50
 - Jason Raymond, 32 French King Hwy, \$759.70
- Surplus Equipment – appliances from Town Hall
 - Haier air conditioner, HWR06XC6, 6000 BTU/hr, 10+ years old
 - Gibson air conditioner, GAL123J1A1, 12000 BTU/hr, 10+ years old
 - GE air conditioner, AEL05LX, 5000 BTU/hr, ~5 years old
 - Bionaire twin window fan, BW2100B, ~5 years old
 - Holmes warm mist humidifier, 3.3 gal. output/day, 10+ years old
- Other business as may arise after the agenda has been posted.
- Public Service Announcements, if any
 - Household Hazardous Waste Collection Day – Saturday, September 25th – save the date. Pre-registration deadline is September 17th

Warrants

FY22 #04 Vendors (\$112,454.85) & Payroll (\$25,781.59) – reviewed & signed on 8/16/21

FY22 #05 – review & sign

Adjournment

Other Invitations/Meetings:

Date	Time	Event	Location
Mon 9/6		Labor Day holiday	
Mon 9/13	5:30 PM	Selectboard meeting	Gill Town Hall, 2 nd floor
Sun 9/26	12-3 PM	Gill Harvest Festival	Town Common
Mon 9/27	5:30 PM	Selectboard meeting	Gill Town Hall, 2 nd floor

Ray Purington/Gill Selectboard

From: John Miner / Gill Highway Superintendent <highway@gillmass.org>
Sent: Tuesday, August 24, 2021 2:51 PM
To: administrator@gillmass.org
Subject: JC Madigan Sander
Attachments: IMG_20210601_141814273.jpg; IMG_20210601_141822694.jpg; IMG_20210601_141837986.jpg

Good Afternoon Ray,

I was wondering if I could please be put on the agenda for Monday's Meeting so I can get permission to move forward and purchase the used 14 foot Stainless Steel Sander that JC Madigan's has. I took a trip down to look at the sander and it is in really good shape. There asking price is \$10000. I asked them about trading in our old stainless steel sander as partial payment. They said they will take \$1000 off the asking price making the purchase \$9000.

Purchasing this sander would give us the safety net that I believe we need until our new truck is available. After we are done using the sander for the season I believe we would be able to turn around and sell the sander and make our money back.

John



Virus-free. www.avg.com







Ray Purington/Gill Selectboard

From: treasurer@gillmass.org
Sent: Wednesday, August 25, 2021 3:42 PM
To: Ray Purington/Gill Selectboard
Subject: FW: Town of Gill - FY 21/22 OPEB valuation proposal
Attachments: Who is Odyssey - for print.pdf; Sample GASB 75 - FY20 Cover Letter (Town of ABC) - 2021-01-28.pdf; Sample GASB74-75.FY20.Report (Town of ABC) - 2021-01-28.pdf; OPEB-FAQs-Web.pdf; Sample Census Template.xlsx; Town of Gill, MA - GASB 75 Services Proposal - August 18, 2021.pdf

From: Parker Elmore <pelmore@odysseyadvisors.com>
Sent: Wednesday, August 18, 2021 3:02 PM
To: treasurer@gillmass.org
Subject: Town of Gill - FY 21/22 OPEB valuation proposal

Peter,

Great to chat this afternoon. As discussed, we work with many municipalities in your area as well as many plans with Tom Scanlon & his team. As such, please find attached our proposal for the Town's upcoming OPEB valuation – the quoted fee is \$5,500 for the two-year cycle which is all-inclusive – it can be split across fiscal years if that's desirable. We work frequently as well with the team at Bartholomew so we encourage you to get their views on how we work. I've included many references including many of your neighboring towns but we can provide more if needed. While all firms, including ours have fancy proposals, I encourage you to reach out to your peers as they ultimately know the process best and can tell you how we work, meet deadlines and support the auditor community.

We've attached a sample report GASB 75 as well as a sample cover letter – I hope you'll find that we really try to write in "English" vs "actuarial speak" as that's truly been a differentiating item for us. The report is much longer than you've seen in the past but everything beyond page 10 of the PDF is really for the audit community to make their job as easy as possible. I've also attached an OPEB FAQ that may be of help as you try to explain OPEB to various stakeholders within the Town. The process is reasonably simple in that we collect certain data, get back to you with any questions and can usually have the report to you in about six weeks but we can certainly do sooner if needed.

Basically, as it relates to data for the OPEB valuation we really need the following (I've attached a template but we'll take whatever is easiest for you to provide):

1. Electronic Census of current active benefit eligible employees (Employee number or other identifier, Name, Gender, Birth Date, Hire Date, Teacher Code (Y/N?), Group Code (1, 2 or 4 if possible), Medical Coverage, Medical Coverage Level (i.e., single, 2-person, family), Dental Coverage (not needed if 100% retiree paid), Dental Coverage Level (not needed since 100% EE paid), Life Insurance Amount in Retirement (e.g., \$5,000), Annual Compensation, Location Code for splits (e.g., Gen Govt, Schools, Police, Fire, DPW, HHS, Library, Water Enterprise, Recreation Enterprise, etc.))
2. Electronic Census of current retirees receiving benefits (Employee number or other identifier, Name, Gender, Birth Date, Hire Date (not required), Retirement Date(only if benefits vary by retirement date), Medical Coverage, Medical Coverage Level, Spouse's birth date, Spouse's gender, Location code for splits (e.g., Gen Govt, Schools, Police, Fire, DPW, HHS, Library, Water Enterprise, Recreation Enterprise, etc.)
3. In lieu of compensation by person, aggregate payroll by function is great. (while no benefits are pay related, the auditors disclose liabilities as a % of payroll so we need to include in the valuation)

4. Copy of the most recent OPEB valuation (we know it's from 2016 but it's a start)
5. Copy of the Town's financial statement as of June 30, 2020 – sounds to be N/A but perhaps the most recent FS you have that shows an OPEB balance, if any
6. Copy of most recent "rate sheet" for such benefits and the effective date (i.e., July 1, 2020 to June 30, 2021) that shows the monthly premiums for each benefit option (i.e., PPO Single vs. HMO Family, etc.). And, when the FY 22 rate sheet becomes available, that would be great too.
 - a. Can you confirm that you do not reimburse retirees for Medicare Part B Premium
 - b. Do you pay Medicare Part B penalties for any retirees? If so, can you provide their names & the penalty amount (e.g., \$100 per month)?
 - c. Are you aware of any current active employees or retirees who will not be eligible for Medicare at age 65? If so, can you share their names as it materially impacts their liability?
 - d. Can you confirm the % of premiums paid by surviving spouses of retirees (e.g., 25%, 50%, 100%)
7. For the OPEB Trust (we can reach out to the provider directly if you share whom you use), we'd request the following:
 - a. Copy of the June 30, 2020 asset statement (we ideally like the entire statement rather than just one page so we can see the asset allocation)
 - b. Copy of the June 30, 2021 asset statement
 - c. Copy of the June 30, 2022 asset statement (when available)
 - d. Verification of the dates & amounts of the FY 21 & FY 22 OPEB Trust contributions (\$13k – just need to know the month)
 - e. The OPEB Trust balance on your G/L as of June 30, 2021 & June 30, 2022
 - f. Funding policy thereafter (e.g., \$13 per year and pension funding thereafter)

While the data request might seem daunting, most of it is basic census information that I would think can be downloaded from your payroll system. If there are particular elements that are difficult to obtain, just let us know and we can see if there is a "work-around". Once we get the necessary data, we are in good shape and can move the process very quickly.

As the largest provider of OPEB services in the Northeast with nearly 500 OPEB clients, we believe that the market recognizes the value such an approach brings for organizations such as yours & look forward to working with you.

Stay safe, enjoy the day & chat soon.

Parker

In the market for a new gig or know someone who is? Check out our [careers](#) page.

"Anything worth doing is worth doing badly at first" – Glenn Stearns



Parker Elmore, ASA, MAAA, FCA, EA

President, Actuary, & CEO

pelmore@odysseyadvisors.com

Toll free (855) 401-GAIN (4246)

East Coast (860) 531-4951 | West Coast (702) 979-2880

Fax (860) 371-2419

Check out our latest [webinar!](#)



From: treasurer@gillmass.org <treasurer@gillmass.org>

Sent: Wednesday, August 18, 2021 1:46 PM

To: Hello <Hello@odysseyadvisors.com>

Subject: OPEB Report

Hello,

I am the Treasurer of the Town of Gill, Mass and I am interested in finding out about doing an OPEB report. Your company has been recommended by our Auditor Tom Scanlon. Could you please get back to me with some information on how we can proceed. Thanks.

Peter Turban

Treasurer

Town of Gill

325 Main Road

Gill, MA 01354

P: 413 863-0192 F: 413 863-7775

C: 413 325-5422

treasurer@gillmass.org www.gillmass.org



This email has been checked for viruses by AVG antivirus software.

www.avg.com

Other Postemployment Benefits or OPEB represents a large liability on the balance sheet of many municipal entities across the United States. As various stakeholders try to understand it, we wanted to answer many of the frequently asked questions to allow you to make better decision on your program.

1. What is OPEB?

Other Postemployment Benefits (“OPEB”) refers to benefits, other than pension, offered to employees after they leave employment. The most common benefits are medical, dental, and life insurance.

2. Does OPEB affect my bond/credit ratings?

OPEB is one element that rating agencies consider when they determine your bond rating. S&P and Moodys have recently increased the share of their rating based on municipal debt including General Obligation, Pension & OPEB.

3. How does OPEB impact my financial statement?

With the implementation of GASB 75, your OPEB liability has moved from the notes section of your financial statement to the balance sheet. While this doesn’t change your liability, it does make it more visible. Your OPEB assets (if any) may allow for the use of a higher discount rate which serves to reduce this disclosed liability beyond the actual amount of OPEB assets.

4. What are the key assumptions?

- **Discount Rate**
What interest rate is being used to value liabilities in today’s dollars?
- **Termination Rate**
What percentage of employees are going to leave each year prior to retirement?
- **Retirement Rates**
What percentage of eligible employees are going to retire each year?
- **Election Percent**
What percentage of employees are going to elect coverage for themselves in retirement? For their spouse?
- **Trend Rate**
How much are medical (and dental) costs expected to increase each year?

5. How is the discount rate determined?

There are five key factors that determine the discount rate:

- **Employer Share of Costs**
What is the portion of retiree medical, dental, and/or life benefits paid by the Employer each year?
- **Municipal Bond Rate**
What are high-grade municipal bonds earning as of the Measurement Date?
- **Current Asset Level**
What is the value of the assets currently held in an irrevocable OPEB trust?
- **Funding Policy**
How much is expected to be contributed to the OPEB Trust each year?
- **Investment Policy**
How will OPEB assets be invested (e.g., target % in stocks, bonds, cash, etc.)?

6. How high of a rate of return on investments should we assume?

The rating agency, Moody’s, has been calculating liabilities at a lower discount rate than the actuarial report if they feel the assumed rate of return is higher than can be justified by the investment policy, increasing the liability they use when determining the bond rating. Therefore, we recommend using an assumed rate of return that is in line with your investment policy rather than an overly aggressive rate.

7. What is Service Cost?

Service Cost represents the present value of the benefits to be paid in the future that are earned by active employees in the current year. This can be thought of as deferred compensation that active employees earn during the year that they are expected to receive in retirement (typically in the form of a medical, dental, and/or life insurance benefit).

8. What is the impact of Medicare Supplement plans on my OPEB liability?

Medicare Supplement plans generally represent the majority of your OPEB liability (usually 75% to 85%). While your active plans impact OPEB, most of the costs relate to the payments you make for your active employees rather than your retirees.

9. Why does the employer share of costs differ from what I am paying each year?

This is because your employer share of costs includes an implicit subsidy. The implicit subsidy arises because retirees who are not eligible for Medicare often are charged the same premium as active employees even though they are expected to incur higher medical costs as they age. Consequently, a portion of the premiums being paid for active employees “subsidize” the premiums of retirees. Actuarial Standards of Practice and GASB standards require the liability associated with this implicit subsidy to be valued.

10. Should I fund my OPEB Liability?

While you are not required to fund your OPEB liability, the management of your OPEB liability (including the level of funding) is one element that rating agencies consider when determining a municipality’s bond rating. You should consider this, coupled with your other financial needs, when determining whether funding is right for you.

11. Are my peers funding?

While most municipalities are far from fully funded, with the implementation of GASB 74/75, we are seeing many municipalities begin to fund who had not previously done so.

12. What can we do with money in an OPEB trust?

At any time, regardless of your funding status, you can use money in your OPEB trust to pay up to the full amount of expected retiree contributions including implicit cost each year.

13. What else can we do to manage the liability besides funding?

- **Change Medicare Prescription Drug Benefit**
As most OPEB Plans see 75%-85% of the total liability related to benefits paid after attainment of Medicare eligibility, this is the most impactful area to make changes. We’ve seen plan sponsors modify their drug formulary which can reduce current medical payments by 10% to 15% and OPEB liabilities by 15% to 20%.
- **Make your Plan secondary to Medicare**
If you haven’t already done so, you should mandate that those retirees who are eligible for Medicare enroll in it and allow your Plan to become a secondary payor.
- **Change Cost Sharing**
Under Massachusetts law, the maximum allowable contribution rate is 50%. As you charge retirees more, your cash costs & disclosed liabilities will decrease.

14. Are there any upcoming legislative actions that will impact our liability?

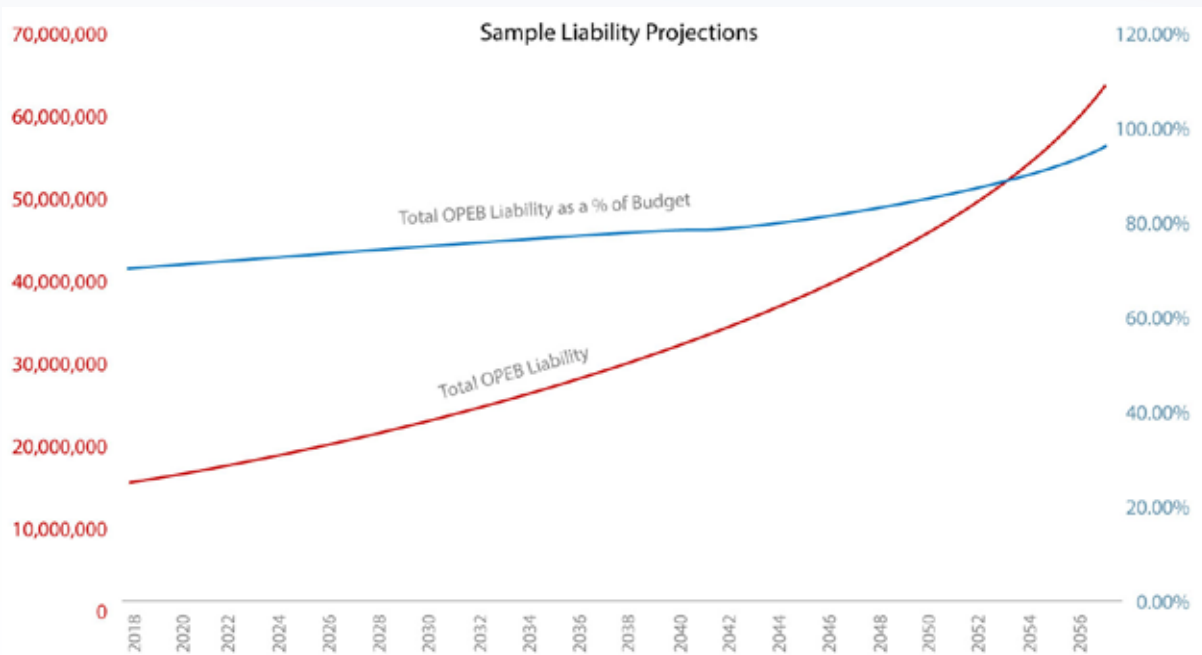
Under the Patient Protection and Affordable Care Act (“PPACA”), an excise tax will be imposed for tax years beginning after December 31, 2021 (formerly December 31, 2017, but amended by the Consolidated Appropriations Act) for high cost employer sponsored health coverage. The law specifies a 40% excise tax, to be paid by the provider of such coverage, of the excess value beyond a basic dollar amount plus an additional “kicker” for qualified retirees or those engaged in a high-risk profession. The impact of the excise tax should already be reflected in your OPEB liability.

15. How many towns are funding their liability?

As of January 1, 2019, a survey of Odyssey clients shows that 79% of the towns and cities in Massachusetts are funding; however, most of them are not materially funded. Only 53% of the towns and cities are over 1% funded, 19% are over 10% funded and 11% are over 20% funded.

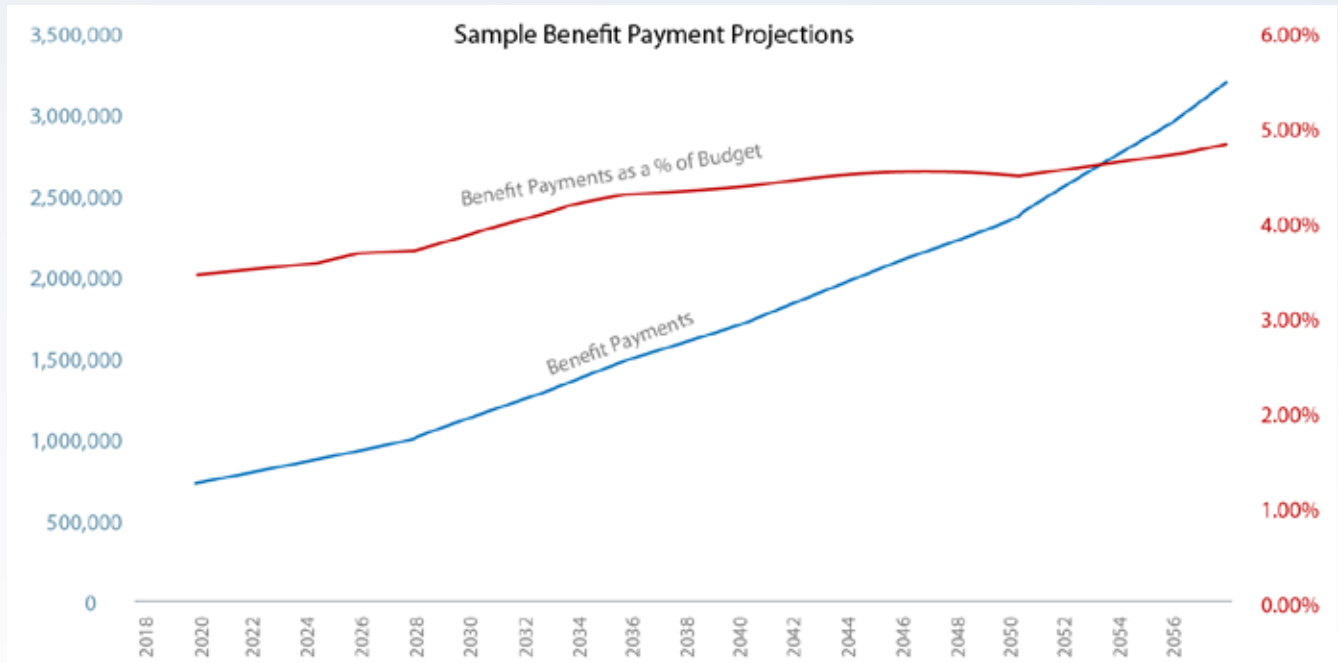
Future Liabilities & Expenses

While your projected future Total OPEB Liability may appear daunting, a more relevant metric is the relation to your budget and your ability to pay. The following graph depicts a sample OPEB Plan and shows the relation of the Total OPEB Liability to the annual budget (assuming your budget increases 3.00% per year). As you can see, while the liability increases significantly, it only increases slightly as a percent of the budget.



The above graph is based on a Total OPEB Liability that is projected to increase from \$15 million to \$65 million between 2018 & 2056. The Total OPEB Liability as a percentage of budget is projected to increase from 72% to 98% between 2018 & 2056.

Similarly, while benefit payments (e.g. the portion of premiums that you pay for your retirees) will likely increase significantly in coming years, the increase in costs appears far more manageable when seen as a percentage of the annual budget.



The above graph is based on benefit payments (“Employer share of costs”) that are projected to increase from \$700 thousand to \$3 million between 2018 & 2056. Benefit payments as a percent of budget are projected to increase from 3.5% to 4.9% between 2018 & 2056.

If you have any questions or would like more information, please contact your Odyssey Advisors representative.

Parker Elmore, ASA, EA, MAAA, FCA is a Consulting Actuary in both the Las Vegas & Connecticut offices of Odyssey. Contact him at pelmore@odysseyadvisors.com.



The Commonwealth of Massachusetts

William Francis Galvin

Secretary of the Commonwealth

One Ashburton Place, Boston, Massachusetts 02108-1512

SINGLE PRECINCT AUTHORIZATION FORM

Name of Town: **GILL**

US Census Bureau 2020 Population Actual: **1,551**

Authorization:

- Pursuant to M. G. L. c. 54, § 6 our town wishes to stay one precinct and hereby request the Secretary of the Commonwealth to prepare a single precinct map on our behalf.

Massachusetts General Laws require towns to divide into convenient voting precincts after each federal census. See M. G. L. c. 54 § 6 (the board of selectmen of every town of less than six thousand, two hundred inhabitants may, on their own motion, or shall, when so directed by the town meeting, and the board of selectmen of every town having precincts or six thousand, two hundred or more inhabitants shall, divide the town into convenient voting precincts).

Approved and accepted,

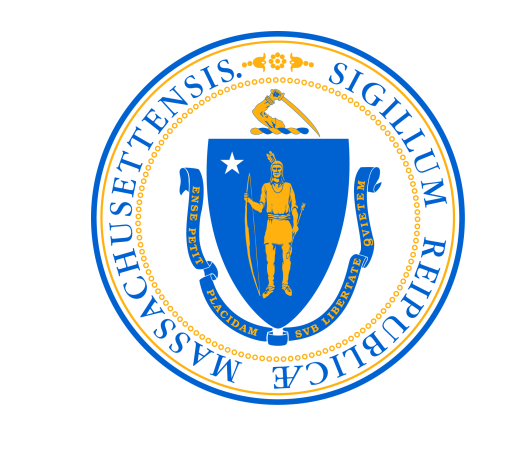
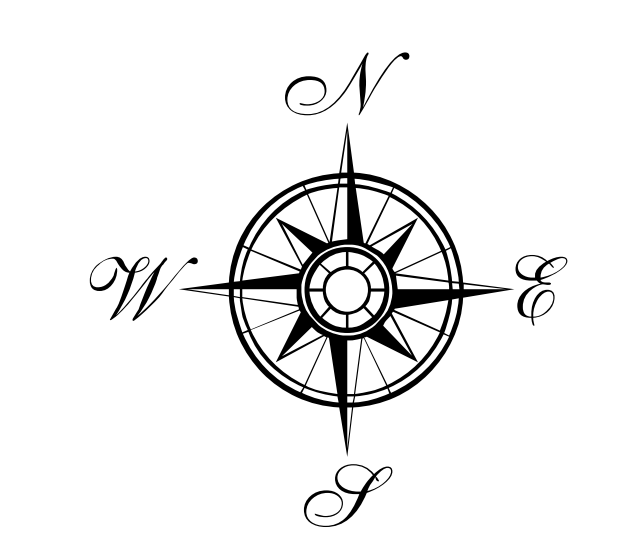
Select Board: _____

Date: _____

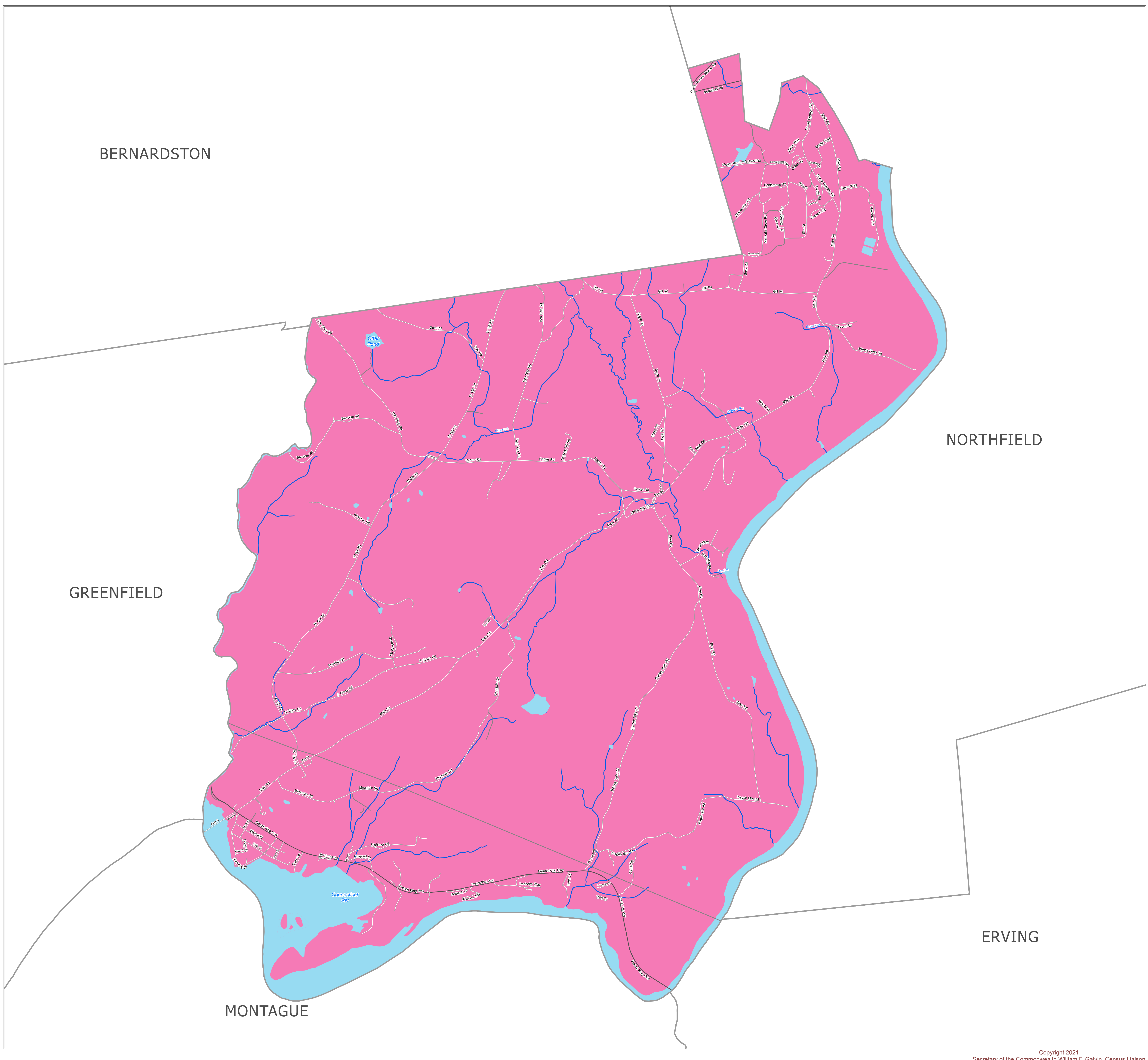
Please mail signed form to:

Local Election Districts Review Commission
 c/o Elections Division
 One Ashburton Place, Room 1705
 Boston, MA 02108

Town of Gill



Map Prepared for the Town of Gill
 Courtesy of William F. Galvin, Census Liaison
 Secretary of the Commonwealth



2020 Population - - 1,551

**Precinct Boundaries
Gill**

Precinct	2020 Population
1	1,551

Population is based on the official U.S. 2020 Census block-level data.
Boundaries effective December 31, 2021

Legend

- Municipal Boundary
- Geographical Features**
- Major Road
- Local Road
- Railroad
- Other Municipal Features
- Streams, Rivers
- Coastal Water, Lakes, Ponds, Major Rivers



Gill 2020

Old VTD	New VTD	Block Code	TotalPop	White	Black	Asian	Other	NHPI	AIAN	POP2RACE	HISPANIC	NOT HISPANIC
Gill Town Precinct 1	1	250110402003000	52	36	3	3	3	0	3	4	4	48
Gill Town Precinct 1	1	250110402003001	16	12	0	0	3	0	1	0	3	13
Gill Town Precinct 1	1	250110402003002	31	30	0	0	0	0	0	1	4	27
Gill Town Precinct 1	1	250110402003003	94	67	6	8	2	2	0	9	4	90
Gill Town Precinct 1	1	250110402003004	0	0	0	0	0	0	0	0	0	0
Gill Town Precinct 1	1	250110402003005	9	6	0	0	0	0	0	3	0	9
Gill Town Precinct 1	1	250110402003006	16	5	2	3	2	0	0	4	6	10
Gill Town Precinct 1	1	250110402003007	37	36	0	0	0	0	0	1	1	36
Gill Town Precinct 1	1	250110402003008	0	0	0	0	0	0	0	0	0	0
Gill Town Precinct 1	1	250110402003009	23	22	0	0	0	0	0	1	0	23
Gill Town Precinct 1	1	250110402003010	17	14	0	3	0	0	0	0	0	17
Gill Town Precinct 1	1	250110402003011	12	8	0	0	0	0	0	4	2	10
Gill Town Precinct 1	1	250110402003012	27	24	0	0	0	0	0	3	0	27
Gill Town Precinct 1	1	250110402003013	29	27	0	0	0	0	0	2	0	29
Gill Town Precinct 1	1	250110402003014	9	5	1	0	0	0	1	2	2	7
Gill Town Precinct 1	1	250110402003015	45	41	0	0	0	0	0	4	4	41
Gill Town Precinct 1	1	250110402003016	14	14	0	0	0	0	0	0	0	14
Gill Town Precinct 1	1	250110402003017	21	18	0	0	0	0	0	3	0	21
Gill Town Precinct 1	1	250110402003018	30	29	0	0	0	0	0	1	0	30
Gill Town Precinct 1	1	250110402003019	2	2	0	0	0	0	0	0	0	2
Gill Town Precinct 1	1	250110402003020	9	6	1	0	0	0	0	2	0	9
Gill Town Precinct 1	1	250110402003021	22	20	0	0	0	0	0	2	0	22
Gill Town Precinct 1	1	250110402003022	6	6	0	0	0	0	0	0	0	6
Gill Town Precinct 1	1	250110402003023	142	135	0	2	4	0	0	1	1	141
Gill Town Precinct 1	1	250110402003024	2	2	0	0	0	0	0	0	0	2
Gill Town Precinct 1	1	250110402003025	5	2	0	1	0	0	0	2	3	2
Gill Town Precinct 1	1	250110402003026	21	16	0	0	0	0	0	5	0	21
Gill Town Precinct 1	1	250110402003027	16	15	0	0	0	0	0	1	0	16
Gill Town Precinct 1	1	250110402003028	7	7	0	0	0	0	0	0	0	7
Gill Town Precinct 1	1	250110402003029	36	35	0	0	0	0	0	1	0	36
Gill Town Precinct 1	1	250110402003030	11	8	0	0	1	0	0	2	0	11
Gill Town Precinct 1	1	250110402003031	0	0	0	0	0	0	0	0	0	0
Gill Town Precinct 1	1	250110402003032	0	0	0	0	0	0	0	0	0	0
Gill Town Precinct 1	1	250110402003033	57	50	0	0	5	0	0	2	6	51
Gill Town Precinct 1	1	250110402003034	37	37	0	0	0	0	0	0	0	37

Gill 2020

Old VTD	New VTD	Block Code	TotalPop	White	Black	Asian	Other	NHPI	AIAN	POP2RACE	HISPANIC	NOT HISPANIC
Gill Town Precinct 1	1	250110402003035	53	52	0	0	0	0	0	1	0	53
Gill Town Precinct 1	1	250110402003036	7	7	0	0	0	0	0	0	0	7
Gill Town Precinct 1	1	250110402003037	6	6	0	0	0	0	0	0	0	6
Gill Town Precinct 1	1	250110402003038	12	9	0	0	0	0	0	3	0	12
Gill Town Precinct 1	1	250110402003039	57	57	0	0	0	0	0	0	0	57
Gill Town Precinct 1	1	250110402003040	31	29	0	0	0	0	0	2	1	30
Gill Town Precinct 1	1	250110402003041	32	29	0	0	0	0	0	3	0	32
Gill Town Precinct 1	1	250110402003042	12	9	0	0	0	0	0	3	0	12
Gill Town Precinct 1	1	250110402003043	16	12	2	1	1	0	0	0	0	16
Gill Town Precinct 1	1	250110402003044	0	0	0	0	0	0	0	0	0	0
Gill Town Precinct 1	1	250110402003045	0	0	0	0	0	0	0	0	0	0
Gill Town Precinct 1	1	250110402003046	0	0	0	0	0	0	0	0	0	0
Gill Town Precinct 1	1	250110402003047	32	32	0	0	0	0	0	0	0	32
Gill Town Precinct 1	1	250110402003048	19	18	0	0	0	0	0	1	0	19
Gill Town Precinct 1	1	250110402003049	9	9	0	0	0	0	0	0	0	9
Gill Town Precinct 1	1	250110402003050	4	4	0	0	0	0	0	0	0	4
Gill Town Precinct 1	1	250110402003051	36	31	0	0	0	0	0	5	2	34
Gill Town Precinct 1	1	250110402003052	24	22	0	0	0	0	0	2	0	24
Gill Town Precinct 1	1	250110402003053	0	0	0	0	0	0	0	0	0	0
Gill Town Precinct 1	1	250110402003054	128	122	0	0	0	0	0	6	3	125
Gill Town Precinct 1	1	250110402003055	20	17	1	0	0	0	0	2	1	19
Gill Town Precinct 1	1	250110402003056	0	0	0	0	0	0	0	0	0	0
Gill Town Precinct 1	1	250110402003057	5	2	0	0	0	0	0	3	1	4
Gill Town Precinct 1	1	250110402003058	29	27	0	0	1	0	0	1	0	29
Gill Town Precinct 1	1	250110402003059	4	2	0	0	0	0	0	2	2	2
Gill Town Precinct 1	1	250110402003060	3	3	0	0	0	0	0	0	0	3
Gill Town Precinct 1	1	250110402003061	0	0	0	0	0	0	0	0	0	0
Gill Town Precinct 1	1	250110402003062	0	0	0	0	0	0	0	0	0	0
Gill Town Precinct 1	1	250110402003063	0	0	0	0	0	0	0	0	0	0
Gill Town Precinct 1	1	250110402003064	0	0	0	0	0	0	0	0	0	0
Gill Town Precinct 1	1	250110402003065	27	27	0	0	0	0	0	0	0	27
Gill Town Precinct 1	1	250110402003066	22	19	0	0	0	0	0	3	0	22
Gill Town Precinct 1	1	250110402003067	20	15	0	0	0	0	0	5	0	20
Gill Town Precinct 1	1	250110402003068	0	0	0	0	0	0	0	0	0	0
Gill Town Precinct 1	1	250110402003069	0	0	0	0	0	0	0	0	0	0

Gill 2020

Old VTD	New VTD	Block Code	TotalPop	White	Black	Asian	Other	NHPI	AIAN	POP2RACE	HISPANIC	NOT HISPANIC	
Gill Town Precinct 1	1	250110402003070	5	4	0	0	0	0	0	1	0	5	
Gill Town Precinct 1	1	250110402003071	0	0	0	0	0	0	0	0	0	0	
Gill Town Precinct 1	1	250110402003072	11	7	0	0	0	0	0	4	0	11	
Gill Town Precinct 1	1	250110402003073	25	20	0	2	1	0	0	2	1	24	
Gill Town Precinct 1	1	250110402003074	8	7	0	0	0	0	0	1	1	7	
Gill Town Precinct 1	1	250110402003075	39	38	0	0	0	0	0	1	0	39	
Gill Town Precinct 1 Total			76	1,551	1,371	16	23	23	2	5	111	52	1,499
Grand Total			76	1,551	1,371	16	23	23	2	5	111	52	1,499

TOWN OF GILL

M A S S A C H U S E T T S



www.gillmass.org

August 30, 2021

Local Election Districts Review Commission
Office of the Secretary of the Commonwealth
c/o Elections Division
One Ashburton Place, Room 1705
Boston, MA 02108

RE: **TOWN OF GILL - 2020 RE-PRECINCTING**

We, the undersigned, hereby certify that at a meeting held on August 30, 2021, the Board of Selectmen voted to remain one (1) precinct.

SIGNED: **Select Board**

Greg Snedeker, Chair

Randy Crochier

Charles Garbiel

A true copy. ATTEST:

Doreen J. Stevens, Town Clerk

Northfield and Gill line 1850.

We the subscribers, Selectmen of Northfield & Gill having this 20th day of November 1850 met agreeable to notice given by Selectmen of Northfield being the most ancient town for the purpose of perambulating and running the lines & renewing the marks between our said towns and having attended that service make return as follows, viz.

Beginning at the Mouth of Bennett's Brook & running by the middle N 75° 10' W. 30 rods to a Stone on the top of Meadow Bank; Thence S 81° 50' W. 12 Rods to a Stone; Thence N. 14° 30' W. 40 rods to a Stone; Thence N 21° W. 63 Rods to a Stone; Thence N. 25° W. 57 rods to a Stone; Thence N 44° 30' W. 37 rods to a Stone; Thence S. 80° 45' W. 43 rods to a Stone; Thence S. 15° W. 36 rods to a Stone; Thence S. 27° 30' W. 61 rods to a Stone; Thence N. 61° W. 57 rods to a Stone; Thence N 3° 30' E. 133 rods to a Stone; Thence S 85° 50' W. 102 rods to Bernardston line.

Simon A. Field 2/3 Selectmen of
Samuel P. Hutton 1/3 Northfield

Gathrop Cushman 2/3 Selectmen
Pascall Marvell 1/3 of Gill

Edwin Strallon, Surveyor.

Bernardston & Gill line 1850

We the subscribers Selectmen of Bernardston & Gill having this 25th day of November 1850 met agreeable to notice given by the Selectmen of said Bernardston, being the most ancient town for the purpose of perambulating and running the lines, & renewing the marks between our said towns and having attended that service, make return as follows, viz.

Beginning at the N. W. corner of said Gill on the east line of said Bernardston & running S. 8 1/2° E. 371 rods to the S. E. corner of said Bernardston; Thence S. 89 1/3° W. 837 rods to the centre of Fall River,

Samuel J. Green 2/3 Selectmen of
Edward H. Snow 1/3 Bernardston
Gathrop Cushman 2/3 Selectmen
Pascall Marvell 1/3 of Gill.

Copy attest E. J. Harting Town Clerk

Perambulation.

Bernardston and Gill Line. 1855.

We the subscribers, Selectmen of Bernardston and Gill, have, this 24th day of November, 1855, met agreeable to notice given by the selectmen of Bernardston, being the most ancient town, for the purpose of perambulating and running the lines, and renewing the marks between our said towns; and having attended to that service, make return as follows: viz.

Beginning at a stone monument at the N. W. corner of said Gill and S. W. corner of Northfield, and running S. $7^{\circ} 50' E$, 371 rods to a stone monument at the S. E. corner of said Bernardston; thence S. $89^{\circ} 50' W$. 337 rods to the centre of Fall River.

Israel P. Hale,	} Selectmen of Bernardston.
Zenas Cutler,	
J. S. Purple,	} Selectmen of Gill.
J. P. Stratton,	

Copy. Attest.
Josiah D. Canning,
Town Clerk.

Perambulation.

Northfield and Gill Line. 1855.

We, the subscribers, Selectmen of Northfield and Gill, have, this 16th day of November, 1855, met according to notice given by the selectmen of Northfield, being the most ancient town, for the purpose of perambulating and running the lines, and renewing the marks between our said towns; and having attended to that service, make return as follows, viz:—

Beginning on the West bank of Connecticut River at the mouth of Bennett's Brook, so called, and running

no.	Course.	Distance.	Remarks.
1.	N. 75 ³ / ₄ W.	30 Rods.	To a stone set in the ground.
2.	S. 82 ¹ / ₄ W.	12 "	" " " " " "
3.	N. 13 ³ / ₄ W.	40 "	" " " " " "
4.	N. 20 ³ / ₄ W.	63 "	" " " " " "
5.	N. 24 ³ / ₄ W.	57 "	" " " " " "
6.	N. 44 ¹ / ₄ W.	37 "	" " " " " "
7.	S. 80 ³ / ₄ W.	43 "	" " " " " "
8.	S. 15 ¹ / ₄ W.	36 "	" " " " " "
9.	S. 25 ¹ / ₄ W.	61 "	" " " " " "
10.	N. 61 ³ / ₄ W.	50 "	" " " " " "
11.	N. 3 ¹ / ₄ E.	132 "	" " " " " "
12.	S. 82 W.	102 "	" " " " " "

at the Southwest corner of said Northfield, on Bernardston Line.

Sam^l W. Dutton, } Selectmen of Northfield.
 Jona. Lyman, }

J. P. Purple, } Selectmen of Gill.
 C. P. Stratton }

Copy. Attest.

Josiah D. Canning,

Town Clerk

Perambulation. - 1865.

Gill and Bernardston Line.

Franklin ss. Commonwealth of Massachusetts.

We, the undersigned, Selectmen of Bernardston and Gill, do hereby certify that we have perambulated and run the dividing lines between said towns, and renewed the marks, according to law.

Dated at Bernardston
Nov 10th 1865.

John F. Hale, } Selectmen of
H. B. Butler } Bernardston.
Simon C. Phillips, } Selectmen of
Albert E. Deane } Gill.

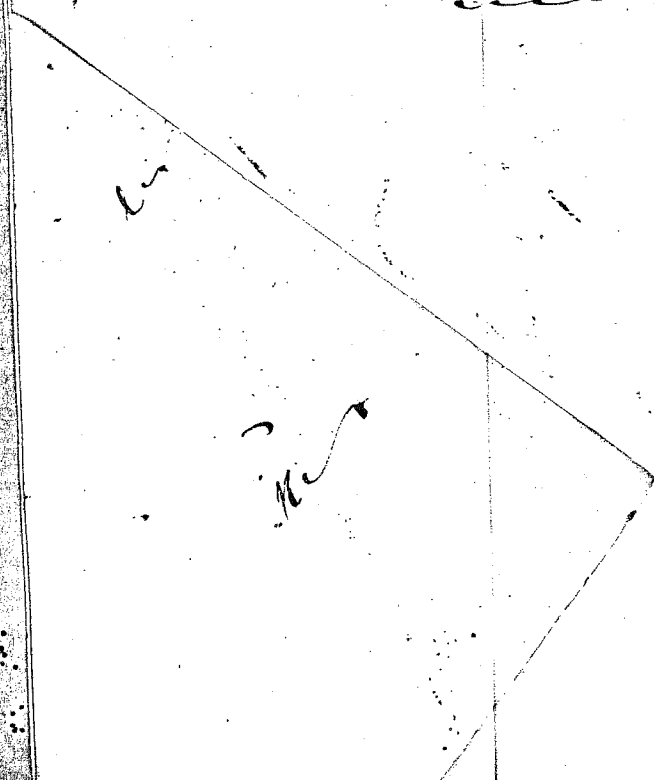
Gill and Northfield Line.

Franklin ss. Commonwealth of Massachusetts.

We, the undersigned, Selectmen of Gill and Northfield, do hereby certify that we have perambulated and run the dividing lines between said towns, and renewed the marks according to law.

Dated at Gill, November
27th 1865.

Simon C. Phillips, } Selectmen
J. Bernard Marble, } of Gill.
J. E. Webster, } Selectmen
E. M. Alexander } of Northfield.



Perambulation of Town Lines.

We, the subscribers, Selectmen of Northfield and Gill, have, this 18th day of Nov. A. D., 1870, met agreeable to notice, given by the selectmen of Northfield, being the most ancient town, for the purpose of perambulating and running the lines, renewing the marks between our said towns, and being attended that service, make return as follows: - Beginning at a stone monument at the S. E. corner of Bernardston and running North $53\frac{1}{2}^{\circ}$ E. - thence S. $4\frac{1}{4}^{\circ}$ W. - thence ^{South} 60° E. - thence North 29° E. - thence North 17° E. - thence South $82\frac{1}{4}^{\circ}$ West, - thence South $42\frac{1}{4}^{\circ}$ E. - thence South $23\frac{3}{4}^{\circ}$ E. - thence South $19\frac{3}{4}^{\circ}$ E. - thence South 13° E. - thence South 83° W. - thence Easterly to the mouth of Bennett's Brook, north side.

Northfield, Nov. 18, 1870.

Signed,

H. W. Montague,

Asa C. Holton,

S. Barton,

Saml. P. Stratton,

Ezra O. Purple,

Selectmen
of
Northfield.

Selectmen
of
Gill.

Commonwealth of Massachusetts,
Franklin Co. - We the undersigned Selectmen of the towns of Bernardston and Gill, do hereby certify that we have this day perambulated and run the dividing line between said towns and renewed their marks according to law.

Dated at Gill this 11th day of
November, A. D., 1870.

H. O. Root,

R. H. Hoyt,

A. Newcomb,

Leonard Barton,

Saml. P. Stratton,

Ezra O. Purple,

Selectmen
of
Bernardston.

Select
men
of
Gill.

Perambulation of Town Lines

undesignated Bernardston & Gill Lines.

We the Selectmen of the Towns of Bernardston and Gill do hereby certify that we have this day perambulated and run the dividing line between said towns and renewed their marks according to the law of this Commonwealth

H. O. Root } Selectmen of
E. S. Hubbert } Bernardston

S. P. Stratton } Selectmen of
E. L. Bascom } Gill

Bernardston Nov. 6th 1875
Copy - Attest Otis F. Hale Town Clerk of Gill

Northfield and Gill Lines.

We the Subscribers Selectmen of Northfield and Gill have this 30th day of October met agreeable to notice given by the Selectmen of Northfield (it being the most ancient Town) for the purpose of Perambulating and running the lines and renewing the marks between our said Towns and having attended to that Service make return as follows - Commencing at a Stone Monument at the South West corner of Northfield and running N-83³/₄° E. - 54¹/₂° W - S 59¹/₂° E. - N 29¹/₂° E. N 17¹/₂° E. S 82³/₄° W. S 41¹/₂° E. S. 23¹/₂° E - S 19¹/₄° E S. 12¹/₂° E. S 82¹/₂° E S 77¹/₂° E - to the mouth of Bennetts Brook

Northfield }
Oct 30 1875 }

L. T. Webster } Selectmen of
James E. Thier } Northfield

S. P. Stratton } Selectmen of
John H. Clark } Gill

Copy Attest Otis F. Hale Town Clerk of Gill

7

Perambulation of Town Lines

We the Subscribers Selectmen of Gill and Northfield have this Tenth day of November 1880 met agreeable to notice given by the Selectmen of Northfield for the purpose of Perambulating and running the lines and viewing the marks between our Towns and having attended to that Service make returns as follows:

Commencing at the Stone Monument which marks the corner of Gill Bernaulsta and Northfield near the house of Nelson Burrows and running N. 84. E. S. 47 1/4 W. - S 59 1/2 E. - N. 28 1/2 E. - N 17 1/2 E. - N 80 1/4 E. - S. 42 1/4 E. - S 23 1/4 E. - S 19 1/4 E. - S 10 1/2 E. S. 84 E. S. 77 1/2 E. to the mouth of Bennett's Brook

J. P. Stratton } Selectmen of
Gill

Asa A. Holton } Selectmen of
Northfield

Copy Attest Otis F. Hall Town Clerk of Gill

We, the undersigned, selectmen of the Towns of Gill and Northfield, hereby certify that we have perambulated and run the lines between our respective towns, and renewed the marks as required by law.

A. O. Stoughton } Selectmen of
Gill.

L. J. Webster } Selectmen of
Northfield.
Geo. J. Bacon }

bill, Dec. 3, 1885.

Copy. Attest.

Josiah D. Cummings
Town Clerk.

TOWN OF GILL
M A S S A C H U S E T T S



www.gillmass.org

SEWER ABATEMENT REQUEST FORM (Revised 01/02/20)

If the usage figures are believed to be incorrect for the current billing cycle, an abatement form must be filled out, signed, and dated to allow the Town to respond and consider the request. **The bill must be paid before any abatement will be considered.** Sewer abatements will not be granted for the following uses: watering gardens; watering lawns; washing vehicles, buildings, driveways, etc.; no water meter reading or use.

Abatement requests must be in writing to the Sewer Commissioners within 30 days of the Bill Date. (NOTE: 30 days of the Bill Date, NOT the Due Date.)

Sewer Bill Date: 3-30-7-5-2021 Sewer Bill #: 7100

Dear Sewer Commissioners: I am requesting abatement of my sewer bill for the noted reason(s).

- Metered water used for filling swimming pools or spas (complete chart below)
(Abatement shall not be granted if calculated amount is less than \$10.00)
- Inaccurate readings (must be confirmed by Water Commissioners)
- Excessive reading due to broken water pipes (must prove that excess water did not enter sewer system)
- Other (explain below)

Explanation: filled hot tubes & pool

Usage History:

Date	"A" Meter Reading Before (Cu. Ft.)	"B" Meter Reading After (Cu. Ft.)	"C" # of Cubic Ft (B - A)	"D" Discounted Sewer Rate (from bill) 0.3408 - 10% = 0.3121 \$/cu. ft.	\$ Requested for Abatement (C x D)
<i>Example</i>	<i>075074</i>	<i>075162</i>	<i>88</i>	<i>0.3121</i>	<i>27.46</i>
<i>June</i>	<i>0-29221</i>	<i>0-29707</i>	<i>486</i>	<i>0.3121</i>	<i>\$156.98</i>
				<i>0.3121</i>	
				<i>0.3121</i>	
				<i>0.3121</i>	
Total requested					\$

0.3230 current rate RP

Continued on second page

SEWER ABATEMENT REQUEST FORM, page 2

Signature Linda Welcome

Today's Date July 29, 2021

Name Linda Welcome

Account # (from bill) _____

Address 2 Grove St.
Hill, Mass. 01354

Tel. 413 863-9208

Meter location if different from above address _____

*Submit this completed form to the Tax Collector
PO Box 784, Turners Falls, MA 01376*

Please keep a copy of this form for your records.

-----Town Use Only Below This Line-----

Date received by Tax Collector 8/4/21 RF (Town has 90 days from receipt to process abatement.)

Sewer bill is paid & no outstanding sewer charges? YES NO

Tax Collector signature _____

Sewer Commission response: Approved _____ Denied _____ Date _____

Sewer Commissioners _____

TOWN OF GILL
MASSACHUSETTS



www.gillmass.org

SEWER ABATEMENT REQUEST FORM (Revised 03/03/21)

If the usage figures are believed to be incorrect for the current billing cycle, an abatement form must be filled out, signed, and dated to allow the Town to respond and consider the request. **The bill must be paid before any abatement will be considered.** Sewer abatements will not be granted for the following uses: watering gardens; watering lawns; washing vehicles, buildings, driveways, etc.; no water meter reading or use.

Abatement requests must be in writing to the Sewer Commissioners within 30 days of the Bill Date. (NOTE: 30 days of the Bill Date, NOT the Due Date.)

Sewer Bill Date: 7/20/2021 Sewer Bill #: 71

Dear Sewer Commissioners: I am requesting abatement of my sewer bill for the noted reason(s).

- Metered water used for filling swimming pools or spas (complete chart below)
(Abatement shall not be granted if calculated amount is less than \$10.00)
- Inaccurate readings (must be confirmed by Water Commissioners)
- Excessive reading due to broken water pipes (must prove that excess water did not enter sewer system)
- Other (explain below)

Explanation: _____

Filled swimming pool.

Usage History:

Date	"A" Meter Reading Before (Cu Ft)	"B" Meter Reading After (Cu Ft)	"C" # of Cubic Ft (B - A)	"D" Discounted Sewer Rate (from bill) 0.3589 - 10% = 0.3230 \$/cu. ft.	\$ Requested for Abatement (C x D)
<i>Example</i>	<i>075074</i>	<i>075162</i>	<i>88</i>	<i>0.3230</i>	<i>28.42</i>
	<i>79727</i>	<i>82294</i>	<i>2567</i>	<i>0.3230</i>	<i>828.52</i>
				<i>0.3230</i>	<i>829.14 RP</i>
				<i>0.3230</i>	
				<i>0.3230</i>	
Total requested					<i>\$ 828.52</i>

Continued on second page

829.14 RP

SEWER ABATEMENT REQUEST FORM, page 2

Signature Peter Griffin

Today's Date 8-5-2021

Name Peter Griffin

Account # (from bill) 7400

Address 9 Grove st
Gill, Mass. 01354

Tel. 413-863-8471

Email Valenyg@comcast.net

Meter location if different from above address _____

Submit this completed form to the Sewer Commissioners (Selectboard):

Mail: 325 Main Road, Gill, MA 01354

Email: administrator@gillmass.org

Do not send this form with your sewer payment. Do not send sewer payments with this form.

Please keep a copy of this form for your records.

-----Town Use Only Below This Line-----

Date received by Sewer Commissioners 8/17/21 (Town has 90 days from receipt to process abatement.)

Sewer bill is paid & no outstanding sewer charges? YES NO Tax Collector signature _____

Sewer Commission response: Approved _____ Denied _____ Date _____

Sewer Commissioners _____

PIONEER Valley Pools
P.O. Box 252
Greenfield, MA 01302

July 2, 2021

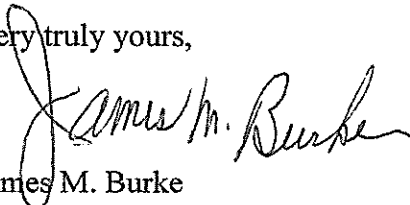
Peter & Valerie Griffin
9 Grove Street
Riverside, Gill, MA 01354

Riverside water District
Town of Gill

To whom it may concern,

Please be advised that the Griffins on 9 Grove Street, Riverside, MA have recently replaced their in ground swimming pool liner. The water used to fill the pool with the new liner amounted to 19,200 gallons. This is arrived at by using the formula, length x width x average depth x 7.5 = total gallons. ($16 \times 32 \times 5 \times 7.5 = 19,200$ gallons).

Very truly yours,



James M. Burke
Pioneer Valley Pools

Cubic feet
 $16 \times 32 \times 5 = 2,560$

TOWN OF GILL

MASSACHUSETTS



www.gillmass.org

SEWER ABATEMENT REQUEST FORM (Revised 03-03-21)

If the usage figures are believed to be incorrect for the current billing cycle, an abatement form must be filled out, signed, and dated to allow the Town to respond and consider the request. **The bill must be paid before any abatement will be considered.** Sewer abatements will not be granted for the following uses: watering gardens; watering lawns; washing vehicles, buildings, driveways, etc.; no water meter reading or use.

Abatement requests must be in writing to the Sewer Commissioners within 30 days of the Bill Date. (NOTE: 30 days of the Bill Date, NOT the Due Date.)

Sewer Bill Date: 7/20/21

Sewer Bill #: 35

Dear Sewer Commissioners: I am requesting abatement of my sewer bill for the noted reason(s).

- Metered water used for filling swimming pools or spas (complete chart below)
(Abatement shall not be granted if calculated amount is less than \$10.00)
- Inaccurate readings (must be confirmed by Water Commissioners)
- Excessive reading due to broken water pipes (must prove that excess water did not enter sewer system)
- Other (explain below)

Explanation: _____

Usage History:

Date	"A" Meter Reading Before (Cu. Ft.)	"B" Meter Reading After (Cu. Ft.)	"C" # of Cubic Ft (B - A)	"D" Discounted Sewer Rate (from bill) 0.3589 - 10% = 0.3230 \$/cu. ft.	\$ Requested for Abatement (C x D)
<i>Example</i>	<i>075074</i>	<i>075162</i>	<i>88</i>	<i>0.3230</i>	<i>28.42</i>
5/22/21	59510	59995	485	0.3230	156.65
				0.3230	
				0.3230	
				0.3230	
Total requested					\$ 156.65

Continued on second page

Telephone 413-863-9347

325 Main Road, Gill MA 01354

Fax 413-863-7775

This institution is an equal opportunity provider and employer.

SEWER ABATEMENT REQUEST FORM, page 2

Signature C. Demars

Today's Date 8/16/21

Name Cathleen Demars

Account # (from bill) 3800

Address 10 Walnut St.

Gill, MA 01354

Tel. 413-522-8592

Email demarscat@hotmail.com

Meter location if different from above address _____

Submit this completed form to the Sewer Commissioners (Selectboard):

Mail: 325 Main Road, Gill, MA 01354

Email: administrator@gillmass.org

Do not send this form with your sewer payment. Do not send sewer payments with this form.

Please keep a copy of this form for your records.

-----Town Use Only Below This Line-----

Date received by Sewer Commissioners 8/16/21 (Town has 90 days from receipt to process abatement.)

Sewer bill is paid & no outstanding sewer charges? YES NO Tax Collector signature _____

Sewer Commission response: Approved _____ Denied _____ Date _____

Sewer Commissioners _____

TOWN OF GILL

MASSACHUSETTS



www.gillmass.org

SEWER ABATEMENT REQUEST FORM (Revised 01/03/21)

If the usage figures are believed to be incorrect for the current billing cycle, an abatement form must be filled out, signed, and dated to allow the Town to respond and consider the request. **The bill must be paid before any abatement will be considered.** Sewer abatements will not be granted for the following uses: watering gardens; watering lawns; washing vehicles, buildings, driveways, etc.; no water meter reading or use.

Abatement requests must be in writing to the Sewer Commissioners within 30 days of the Bill Date. (NOTE: 30 days of the Bill Date, NOT the Due Date.)

Sewer Bill Date: 7/20/21 Sewer Bill #: 79 Account # 8200

Dear Sewer Commissioners: I am requesting abatement of my sewer bill for the noted reason(s).

- Metered water used for filling swimming pools or spas (complete chart below)
(Abatement shall not be granted if calculated amount is less than \$10.00)
- Inaccurate readings (must be confirmed by Water Commissioners)
- Excessive reading due to broken water pipes (must prove that excess water did not enter sewer system)
- Other (explain below)

Explanation: Emailed Water District Chair on July 15 about incident on June 4th with water flooding. Since Water District is separate from Sewer/Town of Gill Department I included a copy for reference and all details are in there.

Usage History:

Date	"A" Meter Reading Before (Cu. Ft.)	"B" Meter Reading After (Cu. Ft.)	"C" # of Cubic Ft (B - A)	"D" Discounted Sewer Rate (from bill) 0.3589 - 10% = 0.3230 \$/cu. ft.	\$ Requested for Abatement (C x D)
<i>Example</i>	<i>075074</i>	<i>075162</i>	<i>88</i>	<i>0.3230</i>	<i>28.42</i>
<i>06/04/21</i>			<i>48</i>	<i>0.3230</i>	<i>\$15.50</i>
				<i>0.3230</i>	
				<i>0.3230</i>	
				<i>0.3230</i>	
				Total requested	\$ 15.50

Continued on second page

SEWER ABATEMENT REQUEST FORM, page 2

Signature Jenna Carne

Today's Date Aug. 2, 2021

Name Jenna Carne

Account # (from bill) 8200

Address 196 Riverview Dr.

Gill, MA 01354

Tel. 413-824-8241

Email jennacarne@gmail.com

Meter location if different from above address _____

Submit this completed form to the Sewer Commissioners (Selectboard):

Mail: 325 Main Road, Gill, MA 01354

Email: administrator@gillmass.org

Do not send this form with your sewer payment. Do not send sewer payments with this form.

Please keep a copy of this form for your records.

-----Town Use Only Below This Line-----

Date received by Sewer Commissioners 8/6/21 (Town has 90 days from receipt to process abatement.)

Sewer bill is paid & no outstanding sewer charges? YES NO Tax Collector signature _____

Sewer Commission response: Approved _____ Denied _____ Date _____

Sewer Commissioners _____

Hello,

On Jun 4, 2021 I arrived home at about 2:45pm. At 3pm the pressure relief valve on my mini tank under my kitchen sink went off. I was able to reset it, then it went off again about 5 minutes later, resulting in an uncontrollable flooding (large and powerful amount). The 5-10 minute interval flooding occurred from the time I got home at 3pm until about 5pm. I immediately tried to shut the water off but, to no avail. My efforts then went to gathering the water so as to not cause any additional damage (water started leaking into the basement, insulation etc). Ultimately, as I saw a trend in the 5-10 minute intervals, I called a water department representative because I saw water hydrants being flushed in the neighborhood on my way home that day. He said there was a possibility that it could be affecting the pressure coming off of the street and into the house and the flushing of the hydrants was scheduled to flush through the afternoon. Since the flooding was too forceful and I was unable to control the gathering and disposal, I then called a plumber. Additionally, every time the mini tank in the kitchen went off, one of the main water heaters in the basement went off simultaneously.

When I called Hartnett Plumbing, initially they said they would not be able to come due to the time of day on a Friday. They are located in Colrain. When I explained the situation in greater detail, they sent someone down. When the plumber came, he also had difficulty shutting the water off but ultimately was successful. In assessing the situation, he came back to explain that normal water pressure should be about 70. The pressure that was coming off the street from the main town line exceeded a 100 and thus there was a probability it was contributing to the uncontrollable flooding. By providing me with an email I can send pictures and videos that will help paint a better picture. I am unsure how you typically calculate the abatement amounts but each time the mini tank and main water heater released, approximately 10-15 gallons came out (low end). I used 5 and 3 gallon buckets to catch the water in-between the times I stated above (6-12 times an hour for 2 hours). If you would like additional information or have further questions, please do not hesitate to contact me either via email or phone (413) 824-8241.

With appreciation,
Jenna Carme

~~Mid~~
Mid-range
 $12.5 \text{ gal} \times \frac{9 \text{ times}}{\text{hr}} \times 2 \text{ hr}$
 $= 225 \text{ gal}$
 $= 30.08 \text{ cu ft}$
 $\times \$0.323/\text{cu ft}$
 $= \$9.72$
Not eligible

High range
 $15 \text{ gal} \times \frac{12 \text{ times}}{\text{hr}} \times 2 \text{ hr}$
 $= 360 \text{ gal}$
 $= 48.1 \text{ cu ft}$
 $\times \$0.323/\text{cu ft}$
 $= \$15.50$

Received
8-18-21
PTT

TOWN OF GILL

M A S S A C H U S E T T S



www.gillmass.org

SEWER ABATEMENT REQUEST FORM (Revised 03/03/21)

If the usage figures are believed to be incorrect for the current billing cycle, an abatement form must be filled out, signed, and dated to allow the Town to respond and consider the request. **The bill must be paid before any abatement will be considered.** Sewer abatements will not be granted for the following uses: watering gardens; watering lawns; washing vehicles, buildings, driveways, etc.; no water meter reading or use.

Abatement requests must be in writing to the Sewer Commissioners within 30 days of the Bill Date. (NOTE: 30 days of the Bill Date, NOT the Due Date.)

Sewer Bill Date: 7/20/2021 Sewer Bill #: 1600 16

Dear Sewer Commissioners: I am requesting abatement of my sewer bill for the noted reason(s).

- Metered water used for filling swimming pools or spas (complete chart below)
(Abatement shall not be granted if calculated amount is less than \$10.00)
- Inaccurate readings (must be confirmed by Water Commissioners)
- Excessive reading due to broken water pipes (must prove that excess water did not enter sewer system)
- Other (explain below)

Explanation: Outdoor hose was left running for a long period of time after my 10 year old daughter finished washing the dog. She was afraid to go behind the tree where the spigot hose bib is, and never told anyone. It was raining so much, no one noticed until the clerk for the water (over

Usage History:

Date	"A" Meter Reading Before (Cu. Ft.)	"B" Meter Reading After (Cu. Ft.)	"C" # of Cubic Ft (B - A)	"D" Discounted Sewer Rate (from bill) <small>0.3589 - 10% = 0.3230 \$/cu. ft.</small>	\$ Requested for Abatement (C x D)
<i>Example</i>	<i>075074</i>	<i>075102</i>	<i>88</i>	<i>0.3230</i>	<i>28.42</i>
			<i>2352</i>	<i>0.3230</i>	<i>759.70</i>
				<i>0.3230</i>	
				<i>0.3230</i>	
				<i>0.3230</i>	
Total requested					\$759.70

Continued on second page

SEWER ABATEMENT REQUEST FORM, page 2

Signature Jason Raymond

Today's Date 8/18/2021

Name JASON RAYMOND

Account # (from bill) 1600

Address 32 FRENCH KING HWY
GILL, MA 01354

Tel. 619-602-3302

Email jayray2k@yahoo.com

Meter location if different from above address _____

Submit this completed form to the Sewer Commissioners (Selectboard):

Mail: 325 Main Road, Gill, MA 01354

Email: administrator@gillmass.org

Do not send this form with your sewer payment. Do not send sewer payments with this form.

Please keep a copy of this form for your records.

-----Town Use Only Below This Line-----

Date received by Sewer Commissioners 8/18/21 (Town has 90 days from receipt to process abatement.)

Sewer bill is paid & no outstanding sewer charges? YES NO Tax Collector signature _____

Sewer Commission response: Approved _____ Denied _____ Date _____

Sewer Commissioners _____

Jason Raymond, 32 French King Highway
 Sewer Abatement Analysis

Commitment	Cubic Feet	
2018-001	2145	
2018-002	2115	
2018-003	1080	
2018-004	1130	
2019-001	1230	
2019-002	1210	
2019-003	1125	
2019-004	1305	
2020-001	1130	Average of 13 quarters = 1160 cu ft
2020-002	1170	Average of three Cycle 004 quarters = 1208 cu ft
2020-003	1260	
2020-004	1190	
2021-001	1185	
2021-002	1075	
2021-003	985	
2021-004	3560	

3560 cu ft for 2021-004
 1208 cu ft average for cycle 004
 2352 cu ft of abnormal usage
 \$ 0.323 sewer charge per cu ft
 \$ 759.70 requested abatement